

		Sheet 1 of 1
Rev: 08/01/20		

1510

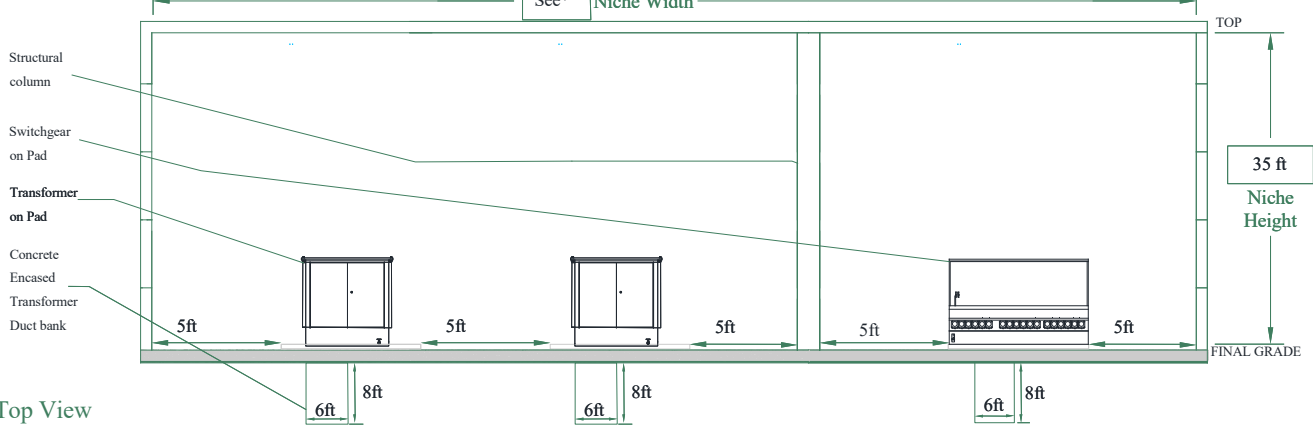
TRANSFORMER-PAD MOUNT

CONTAINS

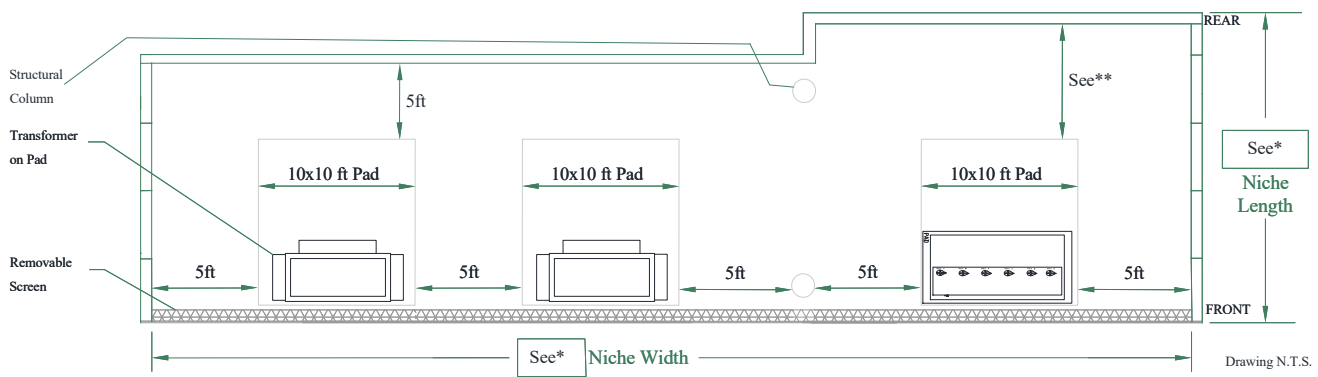
- 1510-02 DISTRIBUTION NICHE**
- 1510-10 XFMR 1PH 120/240V 3W**
- 1510-15 XFMR 3PH 208Y/120V 4W**
- 1510-20 XFMR 3PH 277/480V**
- 1510-25 XFMR DIST VAULT 3PH 120/208V & 277/480V**
- 1510-31 XFMR LOOP FEED 1PH**
- 1510-33 XFMR RADIAL/OPEN LOOP FEED 1PH**
- 1510-41 XFMR LOOP FEED 3PH 120/208V**
- 1510-43 XFMR RADIAL/OPEN LOOP FEED 3PH 120/208V**
- 1510-51 XFMR LOOP FEED 3PH 277/480V**
- 1510-53 XFMR RADIAL/OPEN LOOP FEED 3PH 277/480V**


DISTRIBUTION NICHE

Front View



Top View




	DISTRIBUTION NICHE	1510-02
		Sheet 2 of 2
Rev: 08/01/20		

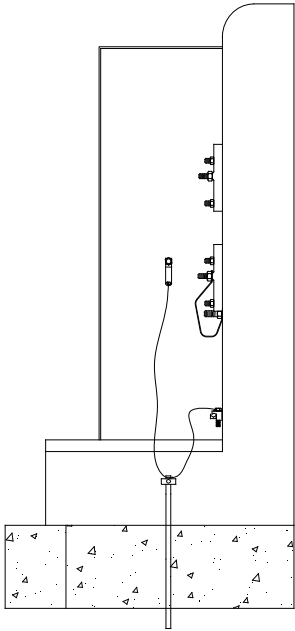
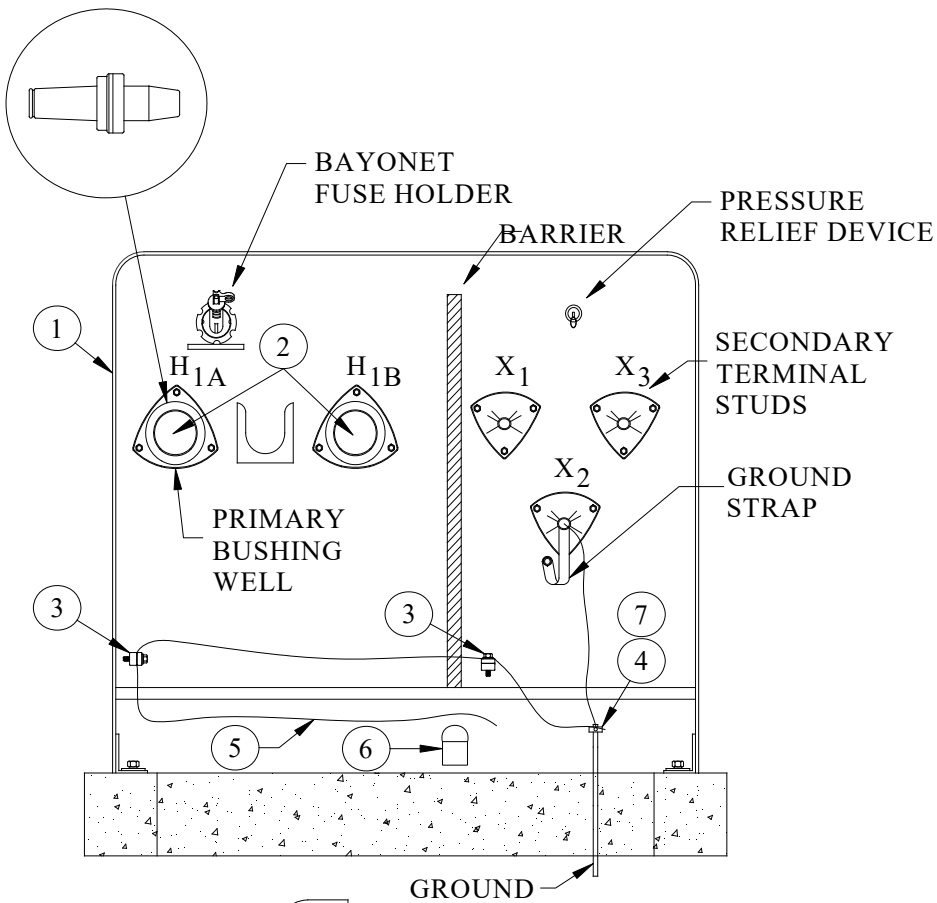
1. Transformer (s)/Switchgear within the niche must face right of way (ROW) (diagram above shows orientations). All padmounted equipment must be at around level but must be 2ft above 100 year flood plain. All concrete pads for transformer/switchgear must be align with niche entrance and not recessed in niche to maintain clearances.
2. Niche’s right of way (ROW) must be free and clear to grade within 20 feet vs 35 feet (this includes the vertical space of the setup area) for each of AE’s padmounted equipment. No fencing trees, street furniture, awnings, balconies or objects of any kind shall be located in this area. Only the removable screen (approved by AE Design Department) which allows air flow, shall be allowed. This area shall be able to support a total weight of 72,180 pounds with a maximum rear axle weight of 32,530 pounds. The maximum acceptable grade leading to the niche entrance is 12 percent (see Design Criteria Manual for truck accessibility guidelines).
3. Niche wall, columns, and ceiling construction must be rated for 3-hour firewall on all sides. Niche ceiling height must be 35ft from concrete pad to inside ceiling. When a column will be located inside the niche for structural support, the necessary clearances must be kept for transformer and switchgear.
4. All niche equipment must be installed on the customer’s property, not in public ROW.
5. Location of the customer’s meter(s) and customer’s electrical equipment meter(s) must be external of the niche and must adhere to Austin Energy’s metering and disconnect equipment requirements in accordance with the latest Austin Energy Criteria Manual.
6. Provision of legal metes and bounds of the whole niche and all other associated Austin Energy’s equipment boundary description is the customer’s responsibility (Contact AE, PIREs department, for details when obtaining easement).
7. Customer is responsible to provide a structural analysis sealed by a professional engineer. Analysis must state that all infrastructure beneath the transformer, pad, and conduit shall support indefinitely the weight of transformer (19,000 pounds) and all associated equipment. The customer must provide plan and profile of Austin Energy primary conduit going into the transformer/switchgear and also any building structure that will be located below our pads or equipment. This profile view must include primary and secondary conduits below transformer/switchgear pad to ensure vertical 3ft clearance is met.
8. Customer is responsible for all conduit (primary, secondary, & service) entering the building footprint.
 - Primary conduit entering the building footprint shall have a vertical 3ft clearance measured from the conduit surface to any building structure. In the event that the conduit is in need of repair, the owner of the building at the time of repair is required to provide access to the AE conduit by whatever means is necessary and once repairs are made., reinstall all civil work to its original integrity and specifications.
 - Primary conduit entering the building footprint and running into the transformer pad shall be 4-4” PVC. Conduit shall be concrete-encased for any portion of the conduit that is internal to the building. Concrete-encasement external to the building shall be per the AE design.
 - Primary conduit entering the building footprint and running into the switchgear pad shall be 5’ PVC (number runs will be determined by AE Design) Conduit with 90 degree bend shall have 24” min radius and shall not cross the primary conduit. Customer must sweet all secondary conduit spares into the metering/electrical room (if present).
9. Equipment in niche must adhere to all other applicable requirements as detailed in the Austin Energy Design Criteria Manual, Austin Energy Civil Specifications, or as indicated by the Austin Energy Design Department.

*Niche Length and Width will be determined by padmounted equipment size and clearance(s)

**Clearance shall be 10ft however when the hotstick operation side is facing the interior of the Niche, clearance increases to 15ft.


1510-10	TRANSFORMER - PAD MOUNT XFMR 1PH 120/240V 3W	
Sheet 1 of 3		Rev: 08/01/20

1510



SIDE VIEW

- 1510-10-01
- 1510-10-03
- 1510-10-04
- 1510-10-05
- 1510-10-07
- 1510-10-09

	TRANSFORMER - PAD MOUNT XFMR 1PH 120/240V 3W	1510-10
		Sheet 2 of 3
Rev: 08/01/20		

CU

CU-ID CU-REF CU-DESCRIPTION

XFMRPM1PH120/240-25KVA 15101001 XFMR PAD MOUNT 1PH 120/240 25 KVA

ID	PART NUM	PART DESC	QTY		CU-REF
1	0000019520	XFMR DIST 25KVA 7.2KV 1PH PAD MT 120/240V (DOE)	1	EA	15101001
2	0000005536	BUSHING TRANSFORMER LOADBREAK CONNECTOR PLUG 8 KV	2	EA	15101001
3	0000001241	CONNECTOR TRANSFORMER TANK GRD #6 SOLID TO 1/0 STR BRZ	2	EA	15101001
4	0000017302	CLAMP GROUND VISE TYPE FOR 5/8 GROUND ROD CAST BRONZE	1	EA	15101001
5	0000004533	CABLE BARE STRD COP TINNED SOFT # 2 2400/FT	6	EA	15101001
6	0000009556	PADLOCK KEYD SARG NLJ82654 W/O KEYS STAMPD COA ELECTRIC	1	EA	15101001
7	0000001246	CONNECTOR SPLIT BOLT 1/0 - 3/0 MCM	1	EA	15101001

XFMRPM1PH120/240-50KVA 15101003 XFMR PAD MOUNT 1PH 120/240 50 KVA


ID	PART NUM	PART DESC	QTY		CU-REF
1	0000019521	XFMR DIST 50KVA 7.2KV 1PH PAD MT 120/240V (DOE)	1	EA	15101003
2	0000005536	BUSHING TRANSFORMER LOADBREAK CONNECTOR PLUG 8 KV	2	EA	15101003
3	0000001241	CONNECTOR TRANSFORMER TANK GRD #6 SOLID TO 1/0 STR BRZ	2	EA	15101003
4	0000017302	CLAMP GROUND VISE TYPE FOR 5/8 GROUND ROD CAST BRONZE	1	EA	15101003
5	0000004533	CABLE BARE STRD COP TINNED SOFT # 2 2400/FT	6	EA	15101003
6	0000009556	PADLOCK KEYD SARG NLJ82654 W/O KEYS STAMPD COA ELECTRIC	1	EA	15101003
7	0000001246	CONNECTOR SPLIT BOLT 1/0 - 3/0 MCM	1	EA	15101003

XFMRPM1PH120/240-75KVA 15101004 XFMR PAD MOUNT 1PH 120/240 75 KVA

ID	PART NUM	PART DESC	QTY		CU-REF
1	0000019522	XFMR DIST 75KVA 7.2KV 1PH PAD MT 120/240V (DOE)	1	EA	15101004
2	0000005536	BUSHING TRANSFORMER LOADBREAK CONNECTOR PLUG 8 KV	2	EA	15101004
3	0000001241	CONNECTOR TRANSFORMER TANK GRD #6 SOLID TO 1/0 STR BRZ	2	EA	15101004
4	0000017302	CLAMP GROUND VISE TYPE FOR 5/8 GROUND ROD CAST BRONZE	1	EA	15101004
5	0000004533	CABLE BARE STRD COP TINNED SOFT # 2 2400/FT	6	EA	15101004
6	0000009556	PADLOCK KEYD SARG NLJ82654 W/O KEYS STAMPD COA ELECTRIC	1	EA	15101004
7	0000001246	CONNECTOR SPLIT BOLT 1/0 - 3/0 MCM	1	EA	15101004

XFMRPM1PH120/240-100KVA 15101005 XFMR PAD MOUNT 1PH 120/240 100 KVA

ID	PART NUM	PART DESC	QTY		CU-REF
1	0000019523	XFMR DIST 100KVA 7.2KV 1PH PAD MT 120/240V (DOE)	1	EA	15101005
2	0000005536	BUSHING TRANSFORMER LOADBREAK CONNECTOR PLUG 8 KV	2	EA	15101005
3	0000001241	CONNECTOR TRANSFORMER TANK GRD #6 SOLID TO 1/0 STR BRZ	2	EA	15101005
4	0000017302	CLAMP GROUND VISE TYPE FOR 5/8 GROUND ROD CAST BRONZE	1	EA	15101005
5	0000004533	CABLE BARE STRD COP TINNED SOFT # 2 2400/FT	6	EA	15101005
6	0000009556	PADLOCK KEYD SARG NLJ82654 W/O KEYS STAMPD COA ELECTRIC	1	EA	15101005
7	0000001246	CONNECTOR SPLIT BOLT 1/0 - 3/0 MCM	1	EA	15101005

1510-10	TRANSFORMER - PAD MOUNT XFMR 1PH 120/240V 3W	
Sheet 3 of 3		Rev: 08/01/20

CU-ID CU-REF CU-DESCRIPTION

XFMRPM1PH120/240-167KVA 15101007 XFMR PAD MOUNT 1PH 120/240 167 KVA

ID	PART NUM	PART DESC	QTY		CU-REF
1	0000019524	XFMR DIST 1 PH PAD MT 167 KVA 120/240V (DOE)	1	EA	15101007
2	0000005536	BUSHING TRANSFORMER LOADBREAK CONNECTOR PLUG 8 KV	2	EA	15101007
3	0000001241	CONNECTOR TRANSFORMER TANK GRD #6 SOLID TO 1/0 STR BRZ	2	EA	15101007
4	0000017302	CLAMP GROUND VISE TYPE FOR 5/8 GROUND ROD CAST BRONZE	1	EA	15101007
5	0000004533	CABLE BARE STRD COP TINNED SOFT # 2 2400/FT	6	EA	15101007
6	0000009556	PADLOCK KEYD SARG NLJ82654 W/O KEYS STAMPD COA ELECTRIC	1	EA	15101007
7	0000001246	CONNECTOR SPLIT BOLT 1/0 - 3/0 MCM	1	EA	15101007

XFMRPM1PH120/240-250KVA 15101009 XFMR PAD MOUNT 1PH 120/240 250 KVA

ID	PART NUM	PART DESC	QTY		CU-REF
1	0000001872	XFMR DIST 1 PH PD MT 250 KVA 120/240V E-1581 7/6/99	1	EA	15101009
2	0000005536	BUSHING TRANSFORMER LOADBREAK CONNECTOR PLUG 8 KV	2	EA	15101009
3	0000001241	CONNECTOR TRANSFORMER TANK GRD #6 SOLID TO 1/0 STR BRZ	2	EA	15101009
4	0000017302	CLAMP GROUND VISE TYPE FOR 5/8 GROUND ROD CAST BRONZE	1	EA	15101009
5	0000004533	CABLE BARE STRD COP TINNED SOFT # 2 2400/FT	6	EA	15101009
6	0000009556	PADLOCK KEYD SARG NLJ82654 W/O KEYS STAMPD COA ELECTRIC	1	EA	15101009
7	0000001246	CONNECTOR SPLIT BOLT 1/0 - 3/0 MCM	1	EA	15101009



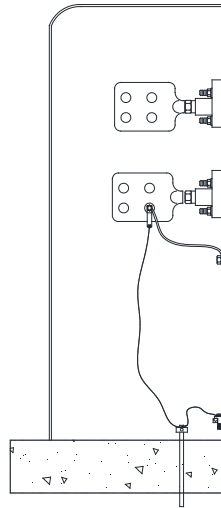
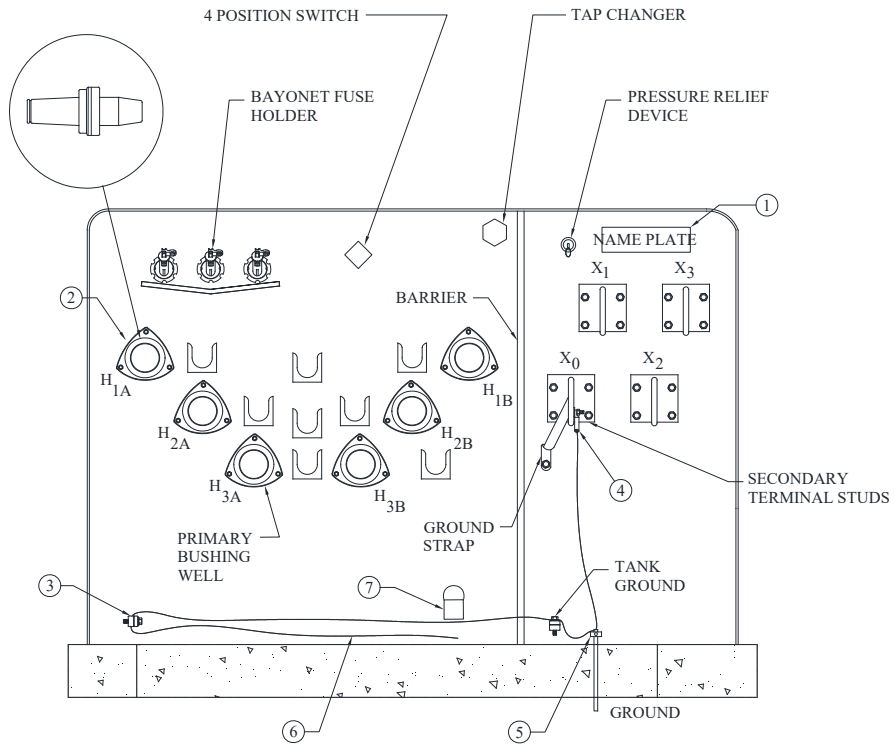
Rev: 08/01/20

TRANSFORMER - PAD MOUNT

XFMR PAD MOUNT 3PH 208Y/120V 4W


1510-15

Sheet 1 of 3



SIDE VIEW

- 1510-15-01
- 1510-15-03
- 1510-15-05
- 1510-15-07
- 1510-15-10
- 1510-15-15

1510-15	TRANSFORMER - PAD MOUNT XFMR PAD MOUNT 3PH 208Y/120V 4W	
Sheet 2 of 3		
Rev: 08/01/20		

CU

CU-ID CU-REF CU-DESCRIPTION

XFMRPM3PH120/208-75KVA 15101501 XFMR PAD MOUNT 3PH 120/208 75 KVA

ID	PART NUM	PART DESC	QTY		CU-REF
1	000000997	XFMR 75KVA 3PH PD MT FEED-T SWITCH D-FRONT 208Y/120V	1	EA	15101501
2	000005536	BUSHING TRANSFORMER LOADBREAK CONNECTOR PLUG 8 KV	6	EA	15101501
3	000001241	CONNECTOR TRANSFORMER TANK GRD #6 SOLID TO 1/0 STR BRZ	2	EA	15101501
4	000005627	LUG COMP #2 STRD COP 3/8" BOLT HOLE TIN PLATED	1	EA	15101501
5	000006840	CLAMP 2 BOLT # 350 MCM COP	1	EA	15101501
6	000004533	CABLE BARE STRD COP TINNED SOFT # 2 2400/FT	10	EA	15101501
7	000009556	PADLOCK KEYD SARG NLJ82654 W/O KEYS STAMPD COA ELECTRIC	1	EA	15101501
8	0000024187	CONNECTOR PADMOUNT TRANSFORMER ALUMINUM	4	EA	15101501

XFMRPM3PH120/208-150KVA 15101503 XFMR PAD MOUNT 3PH 120/208 150 KVA


ID	PART NUM	PART DESC	QTY		CU-REF
1	000000998	XFMR 150KVA 3PH PD MT FEED-T SWITCH D-FRONT 208Y/120V	1	EA	15101503
11	000000518	WASHER BELLVILLE SPRG 6000 LBS LOAD SSTL 1/2 IN	2	EA	15101503
2	000005536	BUSHING TRANSFORMER LOADBREAK CONNECTOR PLUG 8 KV	6	EA	15101503
3	000001241	CONNECTOR TRANSFORMER TANK GRD #6 SOLID TO 1/0 STR BRZ	2	EA	15101503
4	000005627	LUG COMP #2 STRD COP 3/8" BOLT HOLE TIN PLATED	1	EA	15101503
5	000006840	CLAMP 2 BOLT # 350 MCM COP	1	EA	15101503
6	000004533	CABLE BARE STRD COP TINNED SOFT # 2 2400/FT	10	EA	15101503
7	000009556	PADLOCK KEYD SARG NLJ82654 W/O KEYS STAMPD COA ELECTRIC	1	EA	15101503
8	0000024187	CONNECTOR PADMOUNT TRANSFORMER ALUMINUM	4	EA	15101503

XFMRPM3PH120/208-225KVA 15101505 XFMR PAD MOUNT 3PH 120/208 225 KVA

ID	PART NUM	PART DESC	QTY		CU-REF
1	000000999	XFMR 225KVA 3PH PD MT FEED-T SWITCH D-FRONT 208Y/120V	1	EA	15101505
11	000000518	WASHER BELLVILLE SPRG 6000 LBS LOAD SSTL 1/2 IN	2	EA	15101505
2	000005536	BUSHING TRANSFORMER LOADBREAK CONNECTOR PLUG 8 KV	6	EA	15101505
3	000001241	CONNECTOR TRANSFORMER TANK GRD #6 SOLID TO 1/0 STR BRZ	2	EA	15101505
4	000005627	LUG COMP #2 STRD COP 3/8" BOLT HOLE TIN PLATED	1	EA	15101505
5	000006840	CLAMP 2 BOLT # 350 MCM COP	1	EA	15101505
6	000004533	CABLE BARE STRD COP TINNED SOFT # 2 2400/FT	10	EA	15101505
7	000009556	PADLOCK KEYD SARG NLJ82654 W/O KEYS STAMPD COA ELECTRIC	1	EA	15101505
8	0000024187	CONNECTOR PADMOUNT TRANSFORMER ALUMINUM	4	EA	15101505

XFMRPM3PH120/208-300KVA 15101507 XFMR PAD MOUNT 3PH 120/208 300 KVA

ID	PART NUM	PART DESC	QTY		CU-REF
1	000001000	XFMR 300KVA 3PH PD MT FEED-T SWITCH D-FRONT 208Y/120V	1	EA	15101507
11	000001237	WASHER SPLIT LOCK ZINC FOR 1/2 IN BOLT	2	EA	15101507
2	000005536	BUSHING TRANSFORMER LOADBREAK CONNECTOR PLUG 8 KV	6	EA	15101507

	TRANSFORMER - PAD MOUNT XFMR PAD MOUNT 3PH 208Y/120V 4W	1510-15
		Sheet 2 of 3
Rev: 08/01/20		

ID	PART NUM	PART DESC	QTY		CU-REF
3	0000001241	CONNECTOR TRANSFORMER TANK GRD #6 SOLID TO 1/0 STR BRZ	2	EA	15101507
4	0000005627	LUG COMP #2 STRD COP 3/8" BOLT HOLE TIN PLATED	1	EA	15101507
5	0000006840	CLAMP 2 BOLT # 350 MCM COP	1	EA	15101507
6	0000004533	CABLE BARE STRD COP TINNED SOFT # 2 2400/FT	10	EA	15101507
7	0000009556	PADLOCK KEYD SARG NLJ82654 W/O KEYS STAMPD COA ELECTRIC	1	EA	15101507
8	0000024187	CONNECTOR PADMOUNT TRANSFORMER ALUMINUM	4	EA	15101507

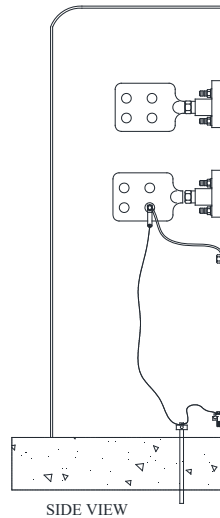
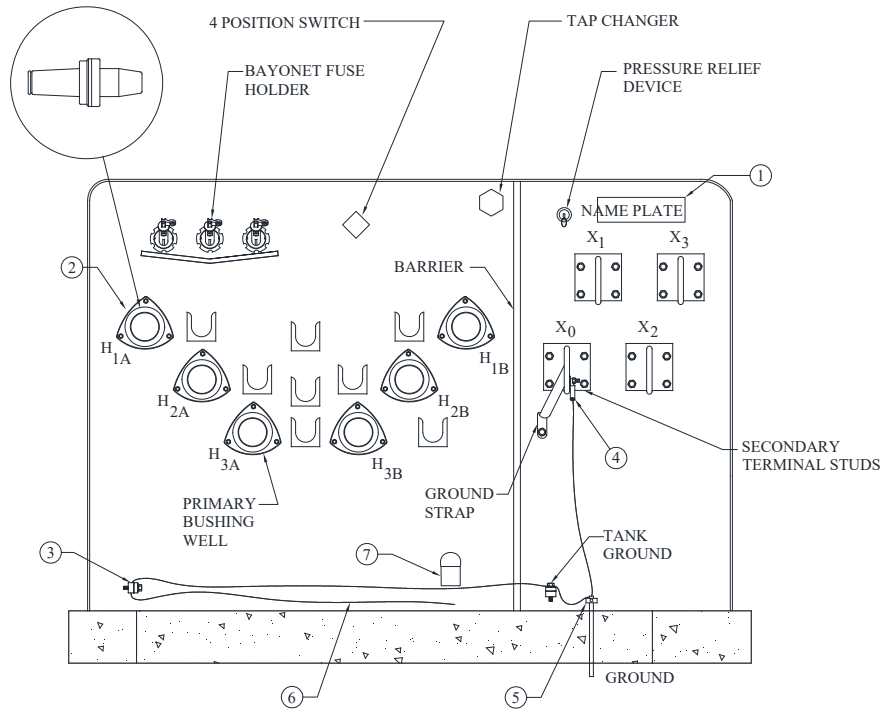


Rev: 08/01/20


TRANSFORMER - PAD MOUNT XFMR PAD MOUNT 3PH 277/480V

1510-20

Sheet 1 of 4



- | | |
|------------|------------|
| 1510-20-01 | 1510-20-15 |
| 1510-20-03 | 1510-20-20 |
| 1510-20-05 | 1510-20-25 |
| 1510-20-07 | 1510-20-30 |
| 1510-20-10 | 1510-20-35 |

1510-20	TRANSFORMER - PAD MOUNT XFMR PAD MOUNT 3PH 277/480V	
Sheet 2 of 4		Rev: 08/01/20

CU

CU-ID CU-REF CU-DESCRIPTION

XFMRPM3PH277/480-75KVA 15102001 XFMR PAD MOUNT 3PH 277/480 75 KVA

ID	PART NUM	PART DESC	QTY		CU-REF
1	000001002	XFMR 75KVA 3PH PD MT FEED-T SWITCH D-FRONT 480Y/277V	1	EA	15102001
2	000005536	BUSHING TRANSFORMER LOADBREAK CONNECTOR PLUG 8 KV	6	EA	15102001
3	000001241	CONNECTOR TRANSFORMER TANK GRD #6 SOLID TO 1/0 STR BRZ	2	EA	15102001
4	000005627	LUG COMP #2 STRD COP 3/8" BOLT HOLE TIN PLATED	1	EA	15102001
5	000006840	CLAMP 2 BOLT # 350 MCM COP	1	EA	15102001
6	000004533	CABLE BARE STRD COP TINNED SOFT # 2 2400/FT	10	EA	15102001
7	000009556	PADLOCK KEYD SARG NLJ82654 W/O KEYS STAMPD COA ELECTRIC	1	EA	15102001
8	0000024187	CONNECTOR PADMOUNT TRANSFORMER ALUMINUM	4	EA	15102001
9	000001237	WASHER SPLIT LOCK ZINC FOR 1/2 IN BOLT	2	EA	15102001

XFMRPM3PH277/480-150KVA 15102003 XFMR PAD MOUNT 3PH 277/480 150 KVA

ID	PART NUM	PART DESC	QTY		CU-REF
1	000001003	XFMR 150KVA 3PH PD MT FEED-T SWITCHD-FRONT 480Y/277V	1	EA	15102003
2	000005536	BUSHING TRANSFORMER LOADBREAK CONNECTOR PLUG 8 KV	6	EA	15102003
3	000001241	CONNECTOR TRANSFORMER TANK GRD #6 SOLID TO 1/0 STR BRZ	2	EA	15102003
4	000005627	LUG COMP #2 STRD COP 3/8" BOLT HOLE TIN PLATED	1	EA	15102003
5	000006840	CLAMP 2 BOLT # 350 MCM COP	1	EA	15102003
6	000004533	CABLE BARE STRD COP TINNED SOFT # 2 2400/FT	10	EA	15102003
7	000009556	PADLOCK KEYD SARG NLJ82654 W/O KEYS STAMPD COA ELECTRIC	1	EA	15102003
8	0000024187	CONNECTOR PADMOUNT TRANSFORMER ALUMINUM	4	EA	15102003
9	000001237	WASHER SPLIT LOCK ZINC FOR 1/2 IN BOLT	2	EA	15102003

XFMRPM3PH277/480-225KVA 15102005 XFMR PAD MOUNT 3PH 277/480 225 KVA

ID	PART NUM	PART DESC	QTY		CU-REF
1	000001010	XFMR 225KVA 3PH PAD FEED-T SWITCH D-FRONT 480Y/277V	1	EA	15102005
2	000005536	BUSHING TRANSFORMER LOADBREAK CONNECTOR PLUG 8 KV	6	EA	15102005
3	000001241	CONNECTOR TRANSFORMER TANK GRD #6 SOLID TO 1/0 STR BRZ	2	EA	15102005
4	000005627	LUG COMP #2 STRD COP 3/8" BOLT HOLE TIN PLATED	1	EA	15102005
5	000006840	CLAMP 2 BOLT # 350 MCM COP	1	EA	15102005
6	000004533	CABLE BARE STRD COP TINNED SOFT # 2 2400/FT	10	EA	15102005
7	000009556	PADLOCK KEYD SARG NLJ82654 W/O KEYS STAMPD COA ELECTRIC	1	EA	15102005
8	0000024187	CONNECTOR PADMOUNT TRANSFORMER ALUMINUM	4	EA	15102005
9	000001237	WASHER SPLIT LOCK ZINC FOR 1/2 IN BOLT	2	EA	15102005

XFMRPM3PH277/480-300KVA 15102007 XFMR PAD MOUNT 3PH 277/480 300 KVA

ID	PART NUM	PART DESC	QTY		CU-REF
1	000001011	XFMR 300KVA 3PH PAD FEED-T SWITCH D-FRONT 480Y/277V	1	EA	15102007
2	000005536	BUSHING TRANSFORMER LOADBREAK CONNECTOR PLUG 8 KV	6	EA	15102007




Rev: 08/01/20

TRANSFORMER - PAD MOUNT
XFMR PAD MOUNT 3PH 277/480V

1510-20

Sheet 2 of 4

ID	PART NUM	PART DESC	QTY		CU-REF
3	0000001241	CONNECTOR TRANSFORMER TANK GRD #6 SOLID TO 1/0 STR BRZ	2	EA	15102007
4	0000005627	LUG COMP #2 STRD COP 3/8" BOLT HOLE TIN PLATED	1	EA	15102007
5	0000006840	CLAMP 2 BOLT # 350 MCM COP	1	EA	15102007
6	0000004533	CABLE BARE STRD COP TINNED SOFT # 2 2400/FT	10	EA	15102007
7	0000009556	PADLOCK KEYD SARG NLJ82654 W/O KEYS STAMPD COA ELECTRIC	1	EA	15102007
8	0000024187	CONNECTOR PADMOUNT TRANSFORMER ALUMINUM	4	EA	15102007
9	0000001237	WASHER SPLIT LOCK ZINC FOR 1/2 IN BOLT	2	EA	15102007

1510-20	TRANSFORMER - PAD MOUNT XFMR PAD MOUNT 3PH 277/480V	 Rev: 08/01/20
Sheet 3 of 4		

CU-ID	CU-REF	CU-DESCRIPTION
--------------	---------------	-----------------------

XFMRPM3PH277/480-500KVA	15102010	XFMR PAD MOUNT 3PH 277/480 500 KVA
-------------------------	----------	------------------------------------

ID	PART NUM	PART DESC	QTY	CU-REF
1	0000001012	XFMR 500KVA 3PH PAD FEED-T SWITCH DFRONT 480Y/277V	1 EA	15102010
2	0000005536	BUSHING TRANSFORMER LOADBREAK CONNECTOR PLUG 8 KV	6 EA	15102010
3	0000001241	CONNECTOR TRANSFORMER TANK GRD #6 SOLID TO 1/0 STR BRZ	2 EA	15102010
4	0000005627	LUG COMP #2 STRD COP 3/8" BOLT HOLE TIN PLATED	1 EA	15102010
5	0000006840	CLAMP 2 BOLT # 350 MCM COP	1 EA	15102010
6	0000004533	CABLE BARE STRD COP TINNED SOFT # 2 2400/FT	10 EA	15102010
7	0000009556	PADLOCK KEYD SARG NLJ82654 W/O KEYS STAMPD COA ELECTRIC	1 EA	15102010
8	0000024187	CONNECTOR PADMOUNT TRANSFORMER ALUMINUM	4 EA	15102010
9	0000001237	WASHER SPLIT LOCK ZINC FOR 1/2 IN BOLT	2 EA	15102010

XFMRPM3PH277/480-750KVA	15102015	XFMR PAD MOUNT 3PH 277/480 750 KVA
-------------------------	----------	------------------------------------


ID	PART NUM	PART DESC	QTY	CU-REF
1	0000001004	XFMR 750KVA 3PH PD MT FEED-T SWITCH D-FRONT 480Y/277V	1 EA	15102015
2	0000005536	BUSHING TRANSFORMER LOADBREAK CONNECTOR PLUG 8 KV	6 EA	15102015
3	0000001241	CONNECTOR TRANSFORMER TANK GRD #6 SOLID TO 1/0 STR BRZ	2 EA	15102015
4	0000005627	LUG COMP #2 STRD COP 3/8" BOLT HOLE TIN PLATED	1 EA	15102015
5	0000006840	CLAMP 2 BOLT # 350 MCM COP	1 EA	15102015
6	0000004533	CABLE BARE STRD COP TINNED SOFT # 2 2400/FT	10 EA	15102015
7	0000009556	PADLOCK KEYD SARG NLJ82654 W/O KEYS STAMPD COA ELECTRIC	1 EA	15102015
8	0000024187	CONNECTOR PADMOUNT TRANSFORMER ALUMINUM	4 EA	15102015
9	0000001237	WASHER SPLIT LOCK ZINC FOR 1/2 IN BOLT	2 EA	15102015

XFMRPM3PH277/480-1000KVA	15102020	XFMR PAD MOUNT 3PH 277/480 1000 KVA
--------------------------	----------	-------------------------------------

ID	PART NUM	PART DESC	QTY	CU-REF
1	0000001005	XFMR 1000KVA 3PH PAD FEED-T SWITCH D-FRONT 480Y/277V	1 EA	15102020
2	0000005536	BUSHING TRANSFORMER LOADBREAK CONNECTOR PLUG 8 KV	6 EA	15102020
3	0000001241	CONNECTOR TRANSFORMER TANK GRD #6 SOLID TO 1/0 STR BRZ	2 EA	15102020
4	0000005627	LUG COMP #2 STRD COP 3/8" BOLT HOLE TIN PLATED	1 EA	15102020
5	0000006840	CLAMP 2 BOLT # 350 MCM COP	1 EA	15102020
6	0000004533	CABLE BARE STRD COP TINNED SOFT # 2 2400/FT	10 EA	15102020
7	0000009556	PADLOCK KEYD SARG NLJ82654 W/O KEYS STAMPD COA ELECTRIC	1 EA	15102020
8	0000024187	CONNECTOR PADMOUNT TRANSFORMER ALUMINUM	4 EA	15102020
9	0000001237	WASHER SPLIT LOCK ZINC FOR 1/2 IN BOLT	2 EA	15102020

XFMRPM3PH277/480-1500KVA	15102025	XFMR PAD MOUNT 3PH 277/480 1500 KVA
--------------------------	----------	-------------------------------------

ID	PART NUM	PART DESC	QTY	CU-REF
1	0000001006	XFMR 1500KVA 3PH PAD FEED-T SWITCH D-FRONT 480Y/277V	1 EA	15102025
2	0000005536	BUSHING TRANSFORMER LOADBREAK CONNECTOR PLUG 8 KV	6 EA	15102025

	TRANSFORMER - PAD MOUNT XFMR PAD MOUNT 3PH 277/480V	1510-20
		Sheet 3 of 4
Rev: 08/01/20		

ID	PART NUM	PART DESC	QTY		CU-REF
3	0000001241	CONNECTOR TRANSFORMER TANK GRD #6 SOLID TO 1/0 STR BRZ	2	EA	15102025
4	0000005627	LUG COMP #2 STRD COP 3/8" BOLT HOLE TIN PLATED	1	EA	15102025
5	0000006840	CLAMP 2 BOLT # 350 MCM COP	1	EA	15102025
6	0000004533	CABLE BARE STRD COP TINNED SOFT # 2 2400/FT	10	EA	15102025
7	0000009556	PADLOCK KEYD SARG NLJ82654 W/O KEYS STAMPD COA ELECTRIC	1	EA	15102025
8	0000024187	CONNECTOR PADMOUNT TRANSFORMER ALUMINUM	4	EA	15102025
9	0000001237	WASHER SPLIT LOCK ZINC FOR 1/2 IN BOLT	2	EA	15102025

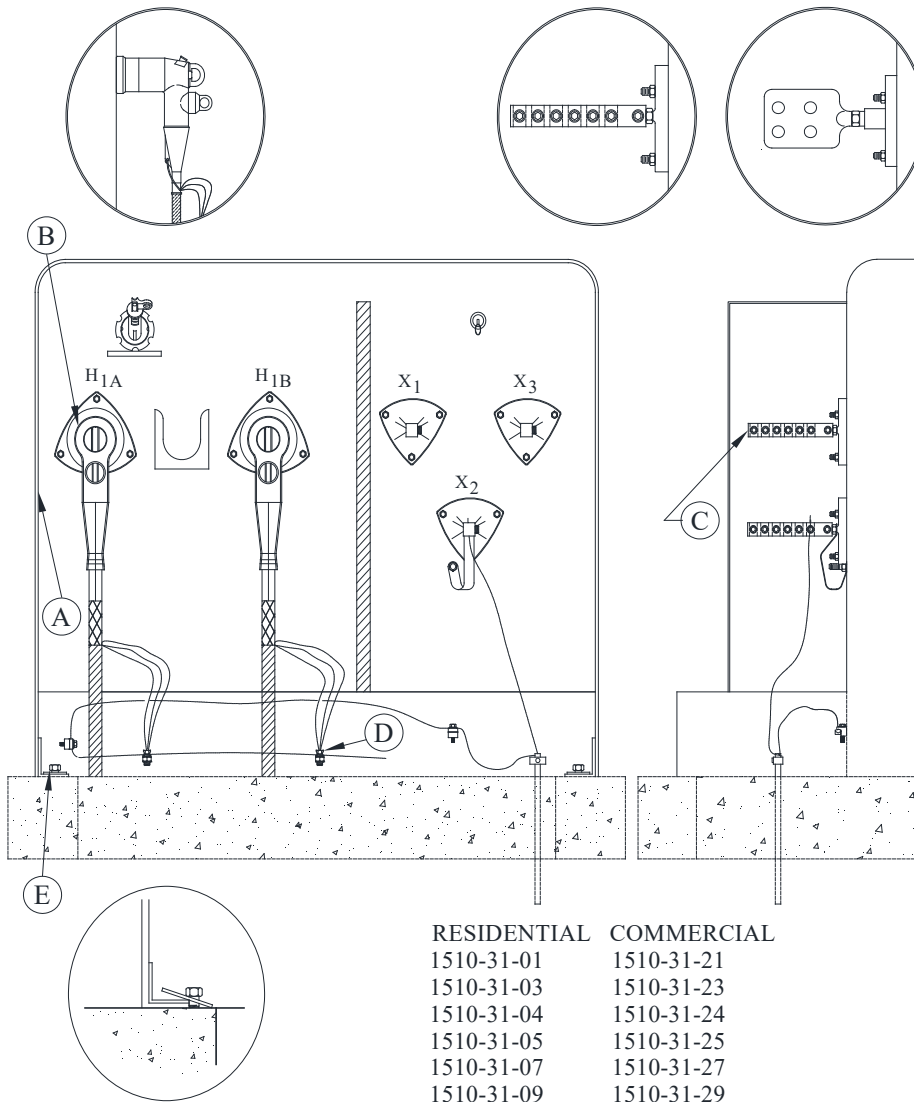


Rev: 08/01/20


TRANSFORMER - PAD MOUNT XFMR PAD MOUNT LOOP FEED 1PH

1510-31

Sheet 1 of 4



- * ALLOW SUFFICIENT LENGTH OF CONCENTRIC NEUTRAL WIRES AND ARRESTER GROUND LEAD TO ENSURE FREE MOVEMENT OF ELBOWS DURING HOT STICK OPERATIONS.
- * GROUND DRAIN WIRES FROM BUSHING TERMINATIONS PER MANUFACTURER'S INSTRUCTIONS TO AVOID DANGEROUS VOLTAGE LEVELS ON THE SURFACE OF DEAD-FRONT EQUIPMENT.
- * PROTECTION. TRANSFORMER PROTECTION IS ACCOMPLISHED THROUGH A SERIES-CONNECTED, TWO FUSE SYSTEM. A FIELD-REPLACEABLE BAY-O-NET FUSE IS SPECIFIED ALONG WITH AN UNDER-OIL CURRENT LIMITING FUSE (CLF) FOR ALL 1PH TRANSFORMERS. BAY-O-NET FUSES ARE DESIGNED TO PROTECT THE TRANSFORMER FROM SECONDARY FAULTS WHILE THE CLF IS DESIGNED TO ISOLATE THE TRANSFORMER IN CASE OF A TRANSFORMER FAILURE. IF THE CLF OPERATES, THE TRANSFORMER IS CHANGED OUT.
- * TRANSFORMER SIZES. FOR INITIAL INSTALLATIONS, USE ONLY 25KVA, 50KVA, AND 75KVA TRANSFORMERS IN NORMAL URD INSTALLATIONS. USE THE LARGER TRANSFORMER (100KVA AND 167KVA) ON SOME LARGE 1PH COMMERCIAL INSTALLATIONS AND FOR UPGRADES IN EXISTING URD INSTALLATIONS. DO NOT USE A 250KVA FOR INITIAL INSTALLATIONS; IT IS ONLY USED FOR REPLACEMENT OF EXISTING HEAVILY LOADED 167KVA TRANSFORMERS.
- * LOCATION. DESIGN INSTALLATIONS AND LOCATE ALL TRANSFORMERS IN AREAS ACCESSIBLE BY TRUCKS. IN RESIDENTIAL INSTALLATIONS, LOCATE TRANSFORMERS ADJACENT TO THE FRONT PROPERTY LINES, EITHER IN THE RIGHT-OF-WAY OR IN A PUBLIC UTILITY EASEMENT ADJACENT TO THE RIGHT-OF-WAY.

1510-31	TRANSFORMER - PAD MOUNT XFMR PAD MOUNT LOOP FEED 1PH	
Sheet 2 of 4		
		Rev: 08/01/20

MU

MU-ID MU-REF MU-DESCRIPTION

XFMRPM1PH120/240-25-LFR 15103101 XFMR PM 1PH 120/240 25KVA LP FD RES

ID	CU-REF	CU-DESC	QTY	MU-REF
A	15101001	XFMR PAD MOUNT 1PH 120/240 25 KVA	1	15103101
B	15021502	ELBOW LOADBREAK 200 AMP 1/0 AWG AL 15KV	2	15103101
C	15021701	XFMR SEC BUSH 6-OUTLET 5/8 IN STUD	3	15103101
D	12450413	CONN SPLIT BOLT 2 STRD CU	2	15103101
E	15020201	ANCH HARDWARE FOR CIP PADS	2	15103101
F	15022125	FAULT INDICATOR WITH 1 PHASE LED LEAD	1	15103101

XFMRPM1PH120/240-50-LFR 15103103 XFMR PM 1PH 120/240 50KVA LP FD RES

ID	CU-REF	CU-DESC	QTY	MU-REF
A	15101003	XFMR PAD MOUNT 1PH 120/240 50 KVA	1	15103103
B	15021502	ELBOW LOADBREAK 200 AMP 1/0 AWG AL 15KV	2	15103103
C	15021701	XFMR SEC BUSH 6-OUTLET 5/8 IN STUD	3	15103103
D	12450413	CONN SPLIT BOLT 2 STRD CU	2	15103103
E	15020201	ANCH HARDWARE FOR CIP PADS	2	15103103
F	15022125	FAULT INDICATOR WITH 1 PHASE LED LEAD	1	15103103

XFMRPM1PH120/240-75-LFR 15103104 XFMR PM 1PH 120/240 75KVA LP FD RES


ID	CU-REF	CU-DESC	QTY	MU-REF
A	15101004	XFMR PAD MOUNT 1PH 120/240 75 KVA	1	15103104
B	15021502	ELBOW LOADBREAK 200 AMP 1/0 AWG AL 15KV	2	15103104
C	15021701	XFMR SEC BUSH 6-OUTLET 5/8 IN STUD	3	15103104
D	12450413	CONN SPLIT BOLT 2 STRD CU	2	15103104
E	15020201	ANCH HARDWARE FOR CIP PADS	2	15103104
F	15022125	FAULT INDICATOR WITH 1 PHASE LED LEAD	1	15103104


XFMRPM1PH120/240-100-LFR 15103105 XFMR PM 1PH 120/240 100KVA LP FD RES

ID	CU-REF	CU-DESC	QTY	MU-REF
A	15101005	XFMR PAD MOUNT 1PH 120/240 100 KVA	1	15103105
B	15021502	ELBOW LOADBREAK 200 AMP 1/0 AWG AL 15KV	2	15103105
C	15021702	XFMR SEC BUSH 6-OUTLET 1 IN STUD	3	15103105
D	12450413	CONN SPLIT BOLT 2 STRD CU	2	15103105
E	15020201	ANCH HARDWARE FOR CIP PADS	2	15103105
F	15022125	FAULT INDICATOR WITH 1 PHASE LED LEAD	1	15103105

XFMRPM1PH120/240-167-LFR 15103107 XFMR PM 1PH 120/240 167KVA LP FD RES

ID	CU-REF	CU-DESC	QTY	MU-REF
A	15101007	XFMR PAD MOUNT 1PH 120/240 167 KVA	1	15103107
B	15021502	ELBOW LOADBREAK 200 AMP 1/0 AWG AL 15KV	2	15103107
C	15021712	XFMR SEC NEMA PAD 1 IN STUD	3	15103107

	TRANSFORMER - PAD MOUNT XFMR PAD MOUNT LOOP FEED 1PH			1510-31
				Sheet 2 of 4
Rev: 08/01/20				
ID	CU-REF	CU-DESC	QTY	MU-REF
D	12450413	CONN SPLIT BOLT 2 STRD CU	2	15103107
E	15020201	ANCH HARDWARE FOR CIP PADS	2	15103107
F	15022125	FAULT INDICATOR WITH 1 PHASE LED LEAD	1	15103107

1510-31	TRANSFORMER - PAD MOUNT XFMR PAD MOUNT LOOP FEED 1PH	 Rev: 08/01/20
Sheet 3 of 4		

MU-ID MU-REF MU-DESCRIPTION

XFMRPM1PH120/240-250-LFR 15103109 XFMR PM 1PH 120/240 250KVA LP FD RES

ID	CU-REF	CU-DESC	QTY	MU-REF
A	15101009	XFMR PAD MOUNT 1PH 120/240 250 KVA	1	15103109
B	15021502	ELBOW LOADBREAK 200 AMP 1/0 AWG AL 15KV	2	15103109
C	15021712	XFMR SEC NEMA PAD 1 IN STUD	3	15103109
D	12450413	CONN SPLIT BOLT 2 STRD CU	2	15103109
E	15020201	ANCH HARDWARE FOR CIP PADS	2	15103109
F	15022125	FAULT INDICATOR WITH 1 PHASE LED LEAD	1	15103109

XFMRPM1PH120/240-25-LFC 15103121 XFMR PM 1PH 120/240 25KVA LP FD COM

ID	CU-REF	CU-DESC	QTY	MU-REF
A	15101001	XFMR PAD MOUNT 1PH 120/240 25 KVA	1	15103121
B	15021502	ELBOW LOADBREAK 200 AMP 1/0 AWG AL 15KV	2	15103121
C	15021711	XFMR SEC NEMA PAD 5/8 IN STUD	3	15103121
D	12450413	CONN SPLIT BOLT 2 STRD CU	2	15103121
E	15020201	ANCH HARDWARE FOR CIP PADS	2	15103121
F	15022125	FAULT INDICATOR WITH 1 PHASE LED LEAD	1	15103121

XFMRPM1PH120/240-50-LFC 15103123 XFMR PM 1PH 120/240 50KVA LP FD COM


ID	CU-REF	CU-DESC	QTY	MU-REF
A	15101003	XFMR PAD MOUNT 1PH 120/240 50 KVA	1	15103123
B	15021502	ELBOW LOADBREAK 200 AMP 1/0 AWG AL 15KV	2	15103123
C	15021711	XFMR SEC NEMA PAD 5/8 IN STUD	3	15103123
D	12450413	CONN SPLIT BOLT 2 STRD CU	2	15103123
E	15020201	ANCH HARDWARE FOR CIP PADS	2	15103123
F	15022125	FAULT INDICATOR WITH 1 PHASE LED LEAD	1	15103123

XFMRPM1PH120/240-75-LFC 15103124 XFMR PM 1PH 120/240 75KVA LP FD COM

ID	CU-REF	CU-DESC	QTY	MU-REF
A	15101004	XFMR PAD MOUNT 1PH 120/240 75 KVA	1	15103124
B	15021502	ELBOW LOADBREAK 200 AMP 1/0 AWG AL 15KV	2	15103124
C	15021711	XFMR SEC NEMA PAD 5/8 IN STUD	3	15103124
D	12450413	CONN SPLIT BOLT 2 STRD CU	2	15103124
E	15020201	ANCH HARDWARE FOR CIP PADS	2	15103124
F	15022125	FAULT INDICATOR WITH 1 PHASE LED LEAD	1	15103124

XFMRPM1PH120/240-100-LFC 15103125 XFMR PM 1PH 120/240 100KVA LP FD COM

ID	CU-REF	CU-DESC	QTY	MU-REF
A	15101005	XFMR PAD MOUNT 1PH 120/240 100 KVA	1	15103125
B	15021502	ELBOW LOADBREAK 200 AMP 1/0 AWG AL 15KV	2	15103125

	TRANSFORMER - PAD MOUNT XFMR PAD MOUNT LOOP FEED 1PH			1510-31
				Sheet 3 of 4
Rev: 08/01/20				
ID	CU-REF	CU-DESC	QTY	MU-REF
C	15021712	XFMR SEC NEMA PAD 1 IN STUD	3	15103125
D	12450413	CONN SPLIT BOLT 2 STRD CU	2	15103125
E	15020201	ANCH HARDWARE FOR CIP PADS	2	15103125
F	15022125	FAULT INDICATOR WITH 1 PHASE LED LEAD	1	15103125



Rev: 08/01/20

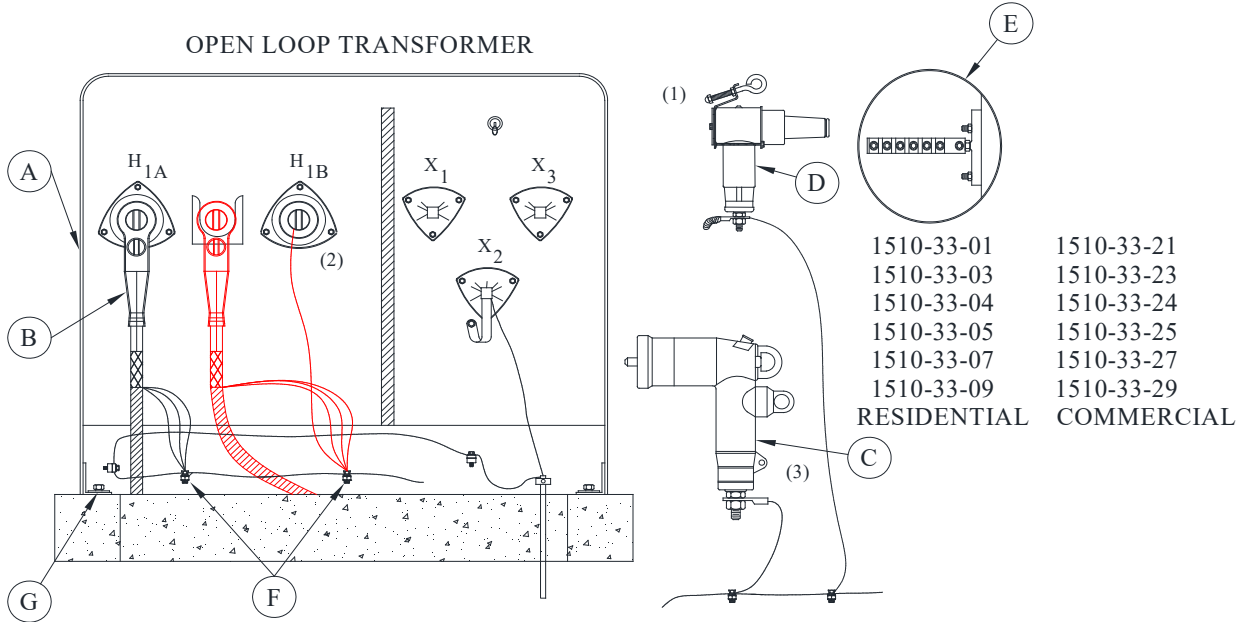
TRANSFORMER - PAD MOUNT

XFMR PAD MOUNT RADIAL/OPEN LOOP FEED 1PH

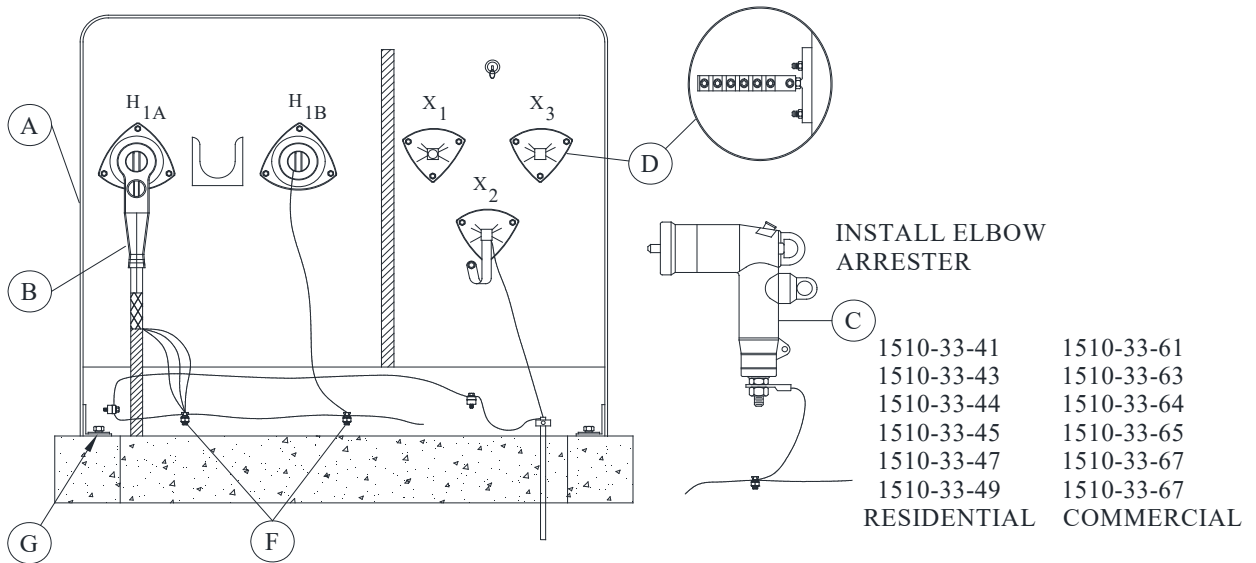
1510-33

Sheet 1 of 7


OPEN LOOP TRANSFORMER



RADIAL FEED TRANSFORMER



1. INSTALL ARRESTER PARKING STAND.
2. MOVE ELBOW TO ARRESTER PARKING STAND.
3. INSTALL ELBOW ARRESTER TO OPEN BUSHING.

1510-33	TRANSFORMER - PAD MOUNT XFMR PAD MOUNT RADIAL/OPEN LOOP FEED 1PH	 Rev: 08/01/20
Sheet 2 of 7		

MU

MU-ID	MU-REF	MU-DESCRIPTION
--------------	---------------	-----------------------

XFMRPM1PH120/240-25-OLR	15103301	XFMR PM 1PH 120/240 25KVA OP LP RES
-------------------------	----------	-------------------------------------

ID	CU-REF	CU-DESC	QTY	MU-REF
A	15101001	XFMR PAD MOUNT 1PH 120/240 25 KVA	1	15103301
B	15021502	ELBOW LOADBREAK 200 AMP 1/0 AWG AL 15KV	2	15103301
C	15020701	ARRESTOR ELBOW 15KV	1	15103301
D	15020705	ARRESTOR PARKING STAND 15KV	1	15103301
E	15021701	XFMR SEC BUSH 6-OUTLET 5/8 IN STUD	3	15103301
F	12450413	CONN SPLIT BOLT 2 STRD CU	4	15103301
G	15020201	ANCH HARDWARE FOR CIP PADS	2	15103301
H	15022125	FAULT INDICATOR WITH 1 PHASE LED LEAD	1	15103301

XFMRPM1PH120/240-50-OLR	15103303	XFMR PM 1PH 120/240 50KVA OP LP RES
-------------------------	----------	-------------------------------------


ID	CU-REF	CU-DESC	QTY	MU-REF
A	15101003	XFMR PAD MOUNT 1PH 120/240 50 KVA	1	15103303
B	15021502	ELBOW LOADBREAK 200 AMP 1/0 AWG AL 15KV	2	15103303
C	15020701	ARRESTOR ELBOW 15KV	1	15103303
D	15020705	ARRESTOR PARKING STAND 15KV	1	15103303
E	15021701	XFMR SEC BUSH 6-OUTLET 5/8 IN STUD	3	15103303
F	12450413	CONN SPLIT BOLT 2 STRD CU	4	15103303
G	15020201	ANCH HARDWARE FOR CIP PADS	2	15103303
H	15022125	FAULT INDICATOR WITH 1 PHASE LED LEAD	1	15103303


XFMRPM1PH120/240-75-OLR	15103304	XFMR PM 1PH 120/240 75KVA OP LP RES
-------------------------	----------	-------------------------------------

ID	CU-REF	CU-DESC	QTY	MU-REF
A	15101004	XFMR PAD MOUNT 1PH 120/240 75 KVA	1	15103304
B	15021502	ELBOW LOADBREAK 200 AMP 1/0 AWG AL 15KV	2	15103304
C	15020701	ARRESTOR ELBOW 15KV	1	15103304
D	15020705	ARRESTOR PARKING STAND 15KV	1	15103304
E	15021701	XFMR SEC BUSH 6-OUTLET 5/8 IN STUD	3	15103304
F	12450413	CONN SPLIT BOLT 2 STRD CU	4	15103304
G	15020201	ANCH HARDWARE FOR CIP PADS	2	15103304
H	15022125	FAULT INDICATOR WITH 1 PHASE LED LEAD	1	15103304

XFMRPM1PH120/240-100-OLR	15103305	XFMR PM 1PH 120/240 100KVA OP LP RES
--------------------------	----------	--------------------------------------

ID	CU-REF	CU-DESC	QTY	MU-REF
A	15101005	XFMR PAD MOUNT 1PH 120/240 100 KVA	1	15103305
B	15021502	ELBOW LOADBREAK 200 AMP 1/0 AWG AL 15KV	2	15103305
C	15020701	ARRESTOR ELBOW 15KV	1	15103305
D	15020705	ARRESTOR PARKING STAND 15KV	1	15103305
E	15021702	XFMR SEC BUSH 6-OUTLET 1 IN STUD	3	15103305

	TRANSFORMER - PAD MOUNT XFMR PAD MOUNT RADIAL/OPEN LOOP FEED 1PH			1510-33
				Sheet 2 of 7
Rev: 08/01/20				
ID	CU-REF	CU-DESC	QTY	MU-REF
F	12450413	CONN SPLIT BOLT 2 STRD CU	4	15103305
G	15020201	ANCH HARDWARE FOR CIP PADS	2	15103305
H	15022125	FAULT INDICATOR WITH 1 PHASE LED LEAD	1	15103305

1510-33	TRANSFORMER - PAD MOUNT XFMR PAD MOUNT RADIAL/OPEN LOOP FEED 1PH	
Sheet 3 of 7		
		Rev: 08/01/20

MU-ID MU-REF MU-DESCRIPTION

XFMRPM1PH120/240-167-OLR 15103307 XFMR PM 1PH 120/240 167KVA OP LP RES

ID	CU-REF	CU-DESC	QTY	MU-REF
A	15101007	XFMR PAD MOUNT 1PH 120/240 167 KVA	1	15103307
B	15021502	ELBOW LOADBREAK 200 AMP 1/0 AWG AL 15KV	2	15103307
C	15020701	ARRESTOR ELBOW 15KV	1	15103307
D	15020705	ARRESTOR PARKING STAND 15KV	1	15103307
E	15021712	XFMR SEC NEMA PAD 1 IN STUD	3	15103307
F	12450413	CONN SPLIT BOLT 2 STRD CU	4	15103307
G	15020201	ANCH HARDWARE FOR CIP PADS	2	15103307
H	15022125	FAULT INDICATOR WITH 1 PHASE LED LEAD	1	15103307

XFMRPM1PH120/240-250-OLR 15103309 XFMR PM 1PH 120/240 250KVA OP LP RES


ID	CU-REF	CU-DESC	QTY	MU-REF
A	15101009	XFMR PAD MOUNT 1PH 120/240 250 KVA	1	15103309
B	15021502	ELBOW LOADBREAK 200 AMP 1/0 AWG AL 15KV	2	15103309
C	15020701	ARRESTOR ELBOW 15KV	1	15103309
D	15020705	ARRESTOR PARKING STAND 15KV	1	15103309
E	15021712	XFMR SEC NEMA PAD 1 IN STUD	3	15103309
F	12450413	CONN SPLIT BOLT 2 STRD CU	4	15103309
G	15020201	ANCH HARDWARE FOR CIP PADS	2	15103309
H	15022125	FAULT INDICATOR WITH 1 PHASE LED LEAD	1	15103309


XFMRPM1PH120/240-25-OLC 15103321 XFMR PM 1PH 120/240 25KVA OP LP COM

ID	CU-REF	CU-DESC	QTY	MU-REF
A	15101001	XFMR PAD MOUNT 1PH 120/240 25 KVA	1	15103321
B	15021502	ELBOW LOADBREAK 200 AMP 1/0 AWG AL 15KV	2	15103321
C	15020701	ARRESTOR ELBOW 15KV	1	15103321
D	15020705	ARRESTOR PARKING STAND 15KV	1	15103321
E	15021711	XFMR SEC NEMA PAD 5/8 IN STUD	3	15103321
F	12450413	CONN SPLIT BOLT 2 STRD CU	4	15103321
G	15020201	ANCH HARDWARE FOR CIP PADS	2	15103321
H	15022125	FAULT INDICATOR WITH 1 PHASE LED LEAD	1	15103321

XFMRPM1PH120/240-50-OLC 15103323 XFMR PM 1PH 120/240 50KVA OP LP COM

ID	CU-REF	CU-DESC	QTY	MU-REF
A	15101003	XFMR PAD MOUNT 1PH 120/240 50 KVA	1	15103323
B	15021502	ELBOW LOADBREAK 200 AMP 1/0 AWG AL 15KV	2	15103323
C	15020701	ARRESTOR ELBOW 15KV	1	15103323
D	15020705	ARRESTOR PARKING STAND 15KV	1	15103323
E	15021711	XFMR SEC NEMA PAD 5/8 IN STUD	3	15103323

	TRANSFORMER - PAD MOUNT XFMR PAD MOUNT RADIAL/OPEN LOOP FEED 1PH			1510-33
				Sheet 3 of 7
Rev: 08/01/20				
ID	CU-REF	CU-DESC	QTY	MU-REF
F	12450413	CONN SPLIT BOLT 2 STRD CU	4	15103323
G	15020201	ANCH HARDWARE FOR CIP PADS	2	15103323
H	15022125	FAULT INDICATOR WITH 1 PHASE LED LEAD	1	15103323

1510-33	TRANSFORMER - PAD MOUNT	
Sheet 4 of 7	XFMR PAD MOUNT RADIAL/OPEN LOOP FEED 1PH	
		Rev: 08/01/20

MU-ID	MU-REF	MU-DESCRIPTION
-------	--------	----------------

XFMRPM1PH120/240-75-OLC	15103324	XFMR PM 1PH 120/240 75KVA OP LP COM
-------------------------	----------	-------------------------------------

ID	CU-REF	CU-DESC	QTY	MU-REF
A	15101004	XFMR PAD MOUNT 1PH 120/240 75 KVA	1	15103324
B	15021502	ELBOW LOADBREAK 200 AMP 1/0 AWG AL 15KV	2	15103324
C	15020701	ARRESTOR ELBOW 15KV	1	15103324
D	15020705	ARRESTOR PARKING STAND 15KV	1	15103324
E	15021711	XFMR SEC NEMA PAD 5/8 IN STUD	3	15103324
F	12450413	CONN SPLIT BOLT 2 STRD CU	4	15103324
G	15020201	ANCH HARDWARE FOR CIP PADS	2	15103324
H	15022125	FAULT INDICATOR WITH 1 PHASE LED LEAD	1	15103324

XFMRPM1PH120/240-100-OLC	15103325	XFMR PM 1PH 120/240 100KVA OP LP COM
--------------------------	----------	--------------------------------------


ID	CU-REF	CU-DESC	QTY	MU-REF
A	15101005	XFMR PAD MOUNT 1PH 120/240 100 KVA	1	15103325
B	15021502	ELBOW LOADBREAK 200 AMP 1/0 AWG AL 15KV	2	15103325
C	15020701	ARRESTOR ELBOW 15KV	1	15103325
D	15020705	ARRESTOR PARKING STAND 15KV	1	15103325
E	15021712	XFMR SEC NEMA PAD 1 IN STUD	3	15103325
F	12450413	CONN SPLIT BOLT 2 STRD CU	4	15103325
G	15020201	ANCH HARDWARE FOR CIP PADS	2	15103325
H	15022125	FAULT INDICATOR WITH 1 PHASE LED LEAD	1	15103325


XFMRPM1PH120/240-167-OLC	15103327	XFMR PM 1PH 120/240 167KVA OP LP COM
--------------------------	----------	--------------------------------------

ID	CU-REF	CU-DESC	QTY	MU-REF
A	15101007	XFMR PAD MOUNT 1PH 120/240 167 KVA	1	15103327
B	15021502	ELBOW LOADBREAK 200 AMP 1/0 AWG AL 15KV	2	15103327
C	15020701	ARRESTOR ELBOW 15KV	1	15103327
D	15020705	ARRESTOR PARKING STAND 15KV	1	15103327
E	15021712	XFMR SEC NEMA PAD 1 IN STUD	3	15103327
F	12450413	CONN SPLIT BOLT 2 STRD CU	4	15103327
G	15020201	ANCH HARDWARE FOR CIP PADS	2	15103327
H	15022125	FAULT INDICATOR WITH 1 PHASE LED LEAD	1	15103327

XFMRPM1PH120/240-250-OLC	15103329	XFMR PM 1PH 120/240 250KVA OP LP COM
--------------------------	----------	--------------------------------------

ID	CU-REF	CU-DESC	QTY	MU-REF
A	15101009	XFMR PAD MOUNT 1PH 120/240 250 KVA	1	15103329
B	15021502	ELBOW LOADBREAK 200 AMP 1/0 AWG AL 15KV	2	15103329
C	15020701	ARRESTOR ELBOW 15KV	1	15103329
D	15020705	ARRESTOR PARKING STAND 15KV	1	15103329
E	15021712	XFMR SEC NEMA PAD 1 IN STUD	3	15103329

	TRANSFORMER - PAD MOUNT XFMR PAD MOUNT RADIAL/OPEN LOOP FEED 1PH			1510-33
				Sheet 4 of 7
Rev: 08/01/20				
ID	CU-REF	CU-DESC	QTY	MU-REF
F	12450413	CONN SPLIT BOLT 2 STRD CU	4	15103329
G	15020201	ANCH HARDWARE FOR CIP PADS	2	15103329
H	15022125	FAULT INDICATOR WITH 1 PHASE LED LEAD	1	15103329

1510-33	TRANSFORMER - PAD MOUNT XFMR PAD MOUNT RADIAL/OPEN LOOP FEED 1PH	 Rev: 08/01/20
Sheet 5 of 7		

MU-ID	MU-REF	MU-DESCRIPTION
--------------	---------------	-----------------------

XFMRPM1PH120/240-25-RFR	15103341	XFMR PM 1PH 120/240 25KVA RD FD RES
-------------------------	----------	-------------------------------------

ID	CU-REF	CU-DESC	QTY	MU-REF
A	15101001	XFMR PAD MOUNT 1PH 120/240 25 KVA	1	15103341
B	15021502	ELBOW LOADBREAK 200 AMP 1/0 AWG AL 15KV	1	15103341
C	15020701	ARRESTOR ELBOW 15KV	1	15103341
D	15021701	XFMR SEC BUSH 6-OUTLET 5/8 IN STUD	3	15103341
E	12450413	CONN SPLIT BOLT 2 STRD CU	2	15103341
F	15020201	ANCH HARDWARE FOR CIP PADS	2	15103341
G	15022125	FAULT INDICATOR WITH 1 PHASE LED LEAD	1	15103341

XFMRPM1PH120/240-50-RFR	15103343	XFMR PM 1PH 120/240 50KVA RD FD RES
-------------------------	----------	-------------------------------------


ID	CU-REF	CU-DESC	QTY	MU-REF
A	15101003	XFMR PAD MOUNT 1PH 120/240 50 KVA	1	15103343
B	15021502	ELBOW LOADBREAK 200 AMP 1/0 AWG AL 15KV	1	15103343
C	15020701	ARRESTOR ELBOW 15KV	1	15103343
D	15021701	XFMR SEC BUSH 6-OUTLET 5/8 IN STUD	3	15103343
E	12450413	CONN SPLIT BOLT 2 STRD CU	2	15103343
F	15020201	ANCH HARDWARE FOR CIP PADS	2	15103343
G	15022125	FAULT INDICATOR WITH 1 PHASE LED LEAD	1	15103343

XFMRPM1PH120/240-75-RFR	15103344	XFMR PM 1PH 120/240 75KVA RD FD RES
-------------------------	----------	-------------------------------------

ID	CU-REF	CU-DESC	QTY	MU-REF
A	15101004	XFMR PAD MOUNT 1PH 120/240 75 KVA	1	15103344
B	15021502	ELBOW LOADBREAK 200 AMP 1/0 AWG AL 15KV	1	15103344
C	15020701	ARRESTOR ELBOW 15KV	1	15103344
D	15021701	XFMR SEC BUSH 6-OUTLET 5/8 IN STUD	3	15103344
E	12450413	CONN SPLIT BOLT 2 STRD CU	2	15103344
F	15020201	ANCH HARDWARE FOR CIP PADS	2	15103344
G	15022125	FAULT INDICATOR WITH 1 PHASE LED LEAD	1	15103344

XFMRPM1PH120/240-100-RFR	15103345	XFMR PM 1PH 120/240 100KVA RD FD RES
--------------------------	----------	--------------------------------------

ID	CU-REF	CU-DESC	QTY	MU-REF
A	15101005	XFMR PAD MOUNT 1PH 120/240 100 KVA	1	15103345
B	15021502	ELBOW LOADBREAK 200 AMP 1/0 AWG AL 15KV	1	15103345
C	15020701	ARRESTOR ELBOW 15KV	1	15103345
D	15021702	XFMR SEC BUSH 6-OUTLET 1 IN STUD	3	15103345
E	12450413	CONN SPLIT BOLT 2 STRD CU	2	15103345
F	15020201	ANCH HARDWARE FOR CIP PADS	2	15103345
G	15022125	FAULT INDICATOR WITH 1 PHASE LED LEAD	1	15103345

	TRANSFORMER - PAD MOUNT XFMR PAD MOUNT RADIAL/OPEN LOOP FEED 1PH	1510-33 Sheet 6 of 7
	Rev: 08/01/20	

MU-ID MU-REF MU-DESCRIPTION

XFMRPM1PH120/240-167-RFR 15103347 XFMR PM 1PH 120/240 167KVA RD FD RES

ID	CU-REF	CU-DESC	QTY	MU-REF
A	15101007	XFMR PAD MOUNT 1PH 120/240 167 KVA	1	15103347
B	15021502	ELBOW LOADBREAK 200 AMP 1/0 AWG AL 15KV	1	15103347
C	15020701	ARRESTOR ELBOW 15KV	1	15103347
D	15021712	XFMR SEC NEMA PAD 1 IN STUD	3	15103347
E	12450413	CONN SPLIT BOLT 2 STRD CU	2	15103347
F	15020201	ANCH HARDWARE FOR CIP PADS	2	15103347
G	15022125	FAULT INDICATOR WITH 1 PHASE LED LEAD	1	15103347

XFMRPM1PH120/240-250-RFR 15103349 XFMR PM 1PH 120/240 250KVA RD FD RES

ID	CU-REF	CU-DESC	QTY	MU-REF
A	15101009	XFMR PAD MOUNT 1PH 120/240 250 KVA	1	15103349
B	15021502	ELBOW LOADBREAK 200 AMP 1/0 AWG AL 15KV	1	15103349
C	15020701	ARRESTOR ELBOW 15KV	1	15103349
D	15021712	XFMR SEC NEMA PAD 1 IN STUD	3	15103349
E	12450413	CONN SPLIT BOLT 2 STRD CU	2	15103349
F	15020201	ANCH HARDWARE FOR CIP PADS	2	15103349
G	15022125	FAULT INDICATOR WITH 1 PHASE LED LEAD	1	15103349

XFMRPM1PH120/240-25-RFC 15103361 XFMR PM 1PH 120/240 25KVA RD FD COM

ID	CU-REF	CU-DESC	QTY	MU-REF
A	15101001	XFMR PAD MOUNT 1PH 120/240 25 KVA	1	15103361
B	15021502	ELBOW LOADBREAK 200 AMP 1/0 AWG AL 15KV	1	15103361
C	15020701	ARRESTOR ELBOW 15KV	1	15103361
D	15021711	XFMR SEC NEMA PAD 5/8 IN STUD	3	15103361
E	12450413	CONN SPLIT BOLT 2 STRD CU	2	15103361
F	15020201	ANCH HARDWARE FOR CIP PADS	2	15103361
G	15022125	FAULT INDICATOR WITH 1 PHASE LED LEAD	1	15103361

XFMRPM1PH120/240-50-RFC 15103363 XFMR PM 1PH 120/240 50KVA RD FD COM

ID	CU-REF	CU-DESC	QTY	MU-REF
A	15101003	XFMR PAD MOUNT 1PH 120/240 50 KVA	1	15103363
B	15021502	ELBOW LOADBREAK 200 AMP 1/0 AWG AL 15KV	1	15103363
C	15020701	ARRESTOR ELBOW 15KV	1	15103363
D	15021711	XFMR SEC NEMA PAD 5/8 IN STUD	3	15103363
E	12450413	CONN SPLIT BOLT 2 STRD CU	2	15103363
F	15020201	ANCH HARDWARE FOR CIP PADS	2	15103363
G	15022125	FAULT INDICATOR WITH 1 PHASE LED LEAD	1	15103363



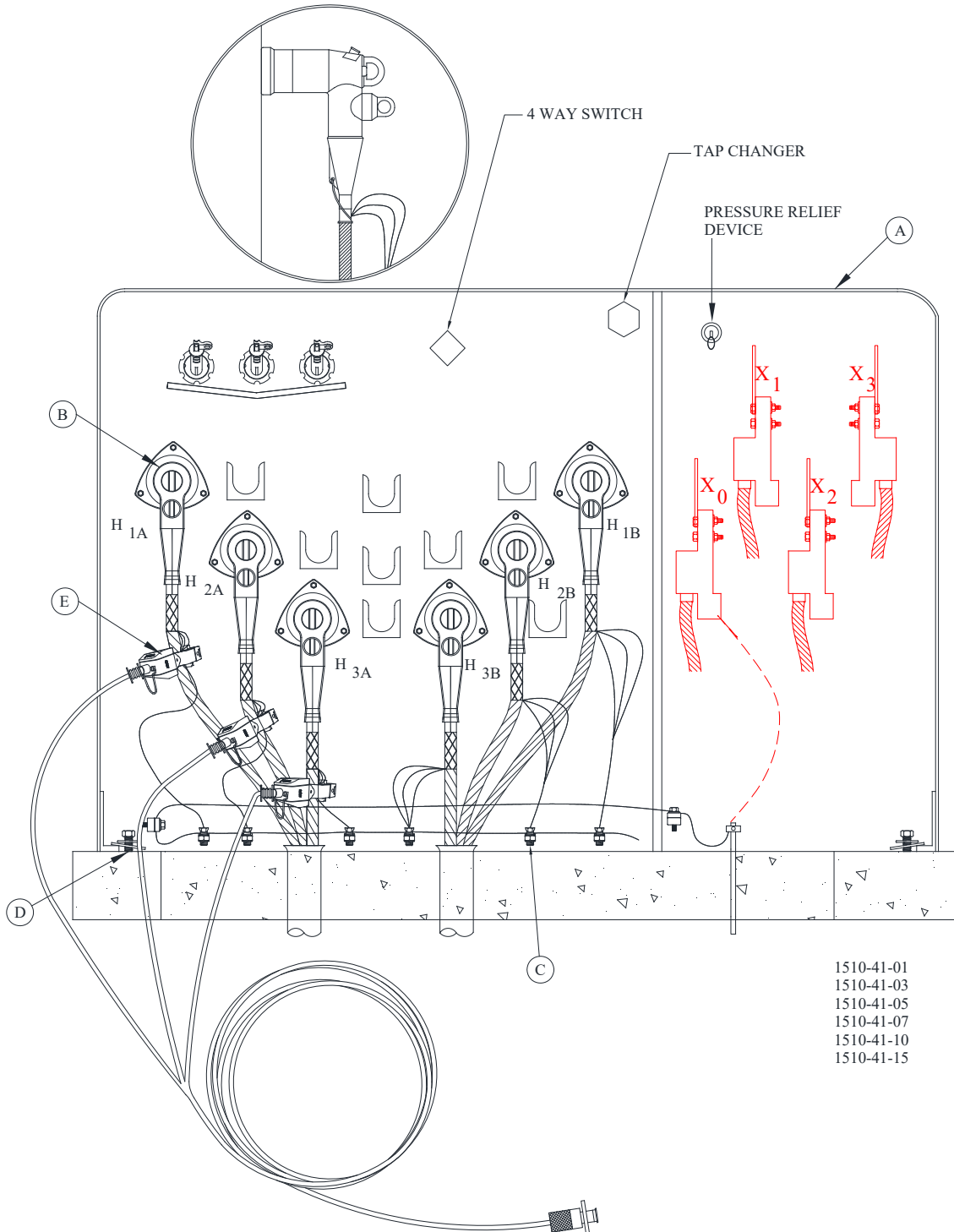
Rev: 08/01/20

TRANSFORMER - PAD MOUNT


XFMR PAD MOUNT LOOP FEED 3PH 120/208V

1510-41

Sheet 1 of 2



- 1510-41-01
- 1510-41-03
- 1510-41-05
- 1510-41-07
- 1510-41-10
- 1510-41-15

1510-41	TRANSFORMER - PAD MOUNT XFMR PAD MOUNT LOOP FEED 3PH 120/208V	
Sheet 2 of 2		
		Rev: 08/01/20

MU

MU-ID MU-REF MU-DESCRIPTION

XFMRPM3PH120/208-75-LF 15104101 XFMR PM 3 PH 120/208 75KVA LP FD

ID	CU-REF	CU-DESC	QTY	MU-REF
A	15101501	XFMR PAD MOUNT 3PH 120/208 75 KVA	1	15104101
B	15021502	ELBOW LOADBREAK 200 AMP 1/0 AWG AL 15KV	6	15104101
C	12450413	CONN SPLIT BOLT 2 STRD CU	6	15104101
D	15020201	ANCH HARDWARE FOR CIP PADS	2	15104101
E	15022130	FAULT INDICATOR WITH 3 PHASE LED LEAD	1	15104101

XFMRPM3PH120/208-150-LF 15104103 XFMR PM 3 PH 120/208 150KVA LP FD

ID	CU-REF	CU-DESC	QTY	MU-REF
A	15101503	XFMR PAD MOUNT 3PH 120/208 150 KVA	1	15104103
B	15021502	ELBOW LOADBREAK 200 AMP 1/0 AWG AL 15KV	6	15104103
C	12450413	CONN SPLIT BOLT 2 STRD CU	6	15104103
D	15020201	ANCH HARDWARE FOR CIP PADS	2	15104103
E	15022130	FAULT INDICATOR WITH 3 PHASE LED LEAD	1	15104103

XFMRPM3PH120/208-225-LF 15104105 XFMR PM 3 PH 120/208 225KVA LP FD

ID	CU-REF	CU-DESC	QTY	MU-REF
A	15101505	XFMR PAD MOUNT 3PH 120/208 225 KVA	1	15104105
B	15021502	ELBOW LOADBREAK 200 AMP 1/0 AWG AL 15KV	6	15104105
C	12450413	CONN SPLIT BOLT 2 STRD CU	6	15104105
D	15020201	ANCH HARDWARE FOR CIP PADS	2	15104105
E	15022130	FAULT INDICATOR WITH 3 PHASE LED LEAD	1	15104105


XFMRPM3PH120/208-300-LF 15104107 XFMR PM 3 PH 120/208 300KVA LP FD

ID	CU-REF	CU-DESC	QTY	MU-REF
A	15101507	XFMR PAD MOUNT 3PH 120/208 300 KVA	1	15104107
B	15021502	ELBOW LOADBREAK 200 AMP 1/0 AWG AL 15KV	6	15104107
C	12450413	CONN SPLIT BOLT 2 STRD CU	6	15104107
D	15020201	ANCH HARDWARE FOR CIP PADS	2	15104107
E	15022130	FAULT INDICATOR WITH 3 PHASE LED LEAD	1	15104107

XFMRPM3PH120/208-500-LF 15104110 XFMR PM 3 PH 120/208 500KVA LP FD

ID	CU-REF	CU-DESC	QTY	MU-REF
A	15101510	XFMR PAD MOUNT 3PH 120/208 500 KVA	1	15104110
B	15021502	ELBOW LOADBREAK 200 AMP 1/0 AWG AL 15KV	6	15104110
C	12450413	CONN SPLIT BOLT 2 STRD CU	6	15104110
D	15020201	ANCH HARDWARE FOR CIP PADS	2	15104110
E	15022130	FAULT INDICATOR WITH 3 PHASE LED LEAD	1	15104110

XFMRPM3PH120/208-750-LF 15104115 XFMR PM 3 PH 120/208 750KVA LP FD

	TRANSFORMER - PAD MOUNT XFMR PAD MOUNT LOOP FEED 3PH 120/208V	1510-41
		Sheet 2 of 2
Rev: 08/01/20		

ID	CU-REF	CU-DESC	QTY	MU-REF
A	15101515	XFMR PAD MOUNT 3PH 120/208 750 KVA	1	15104115
B	15021502	ELBOW LOADBREAK 200 AMP 1/0 AWG AL 15KV	6	15104115
C	12450413	CONN SPLIT BOLT 2 STRD CU	6	15104115
D	15020201	ANCH HARDWARE FOR CIP PADS	2	15104115
E	15022130	FAULT INDICATOR WITH 3 PHASE LED LEAD	1	15104115

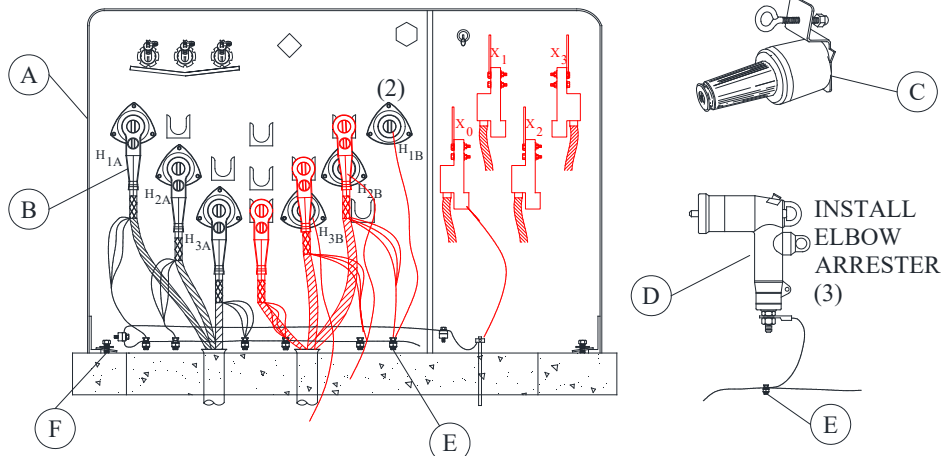
TRANSFORMER - PAD MOUNT

XFMR PAD MOUNT RADIAL/OPEN LOOP FEED 3PH 120/208V



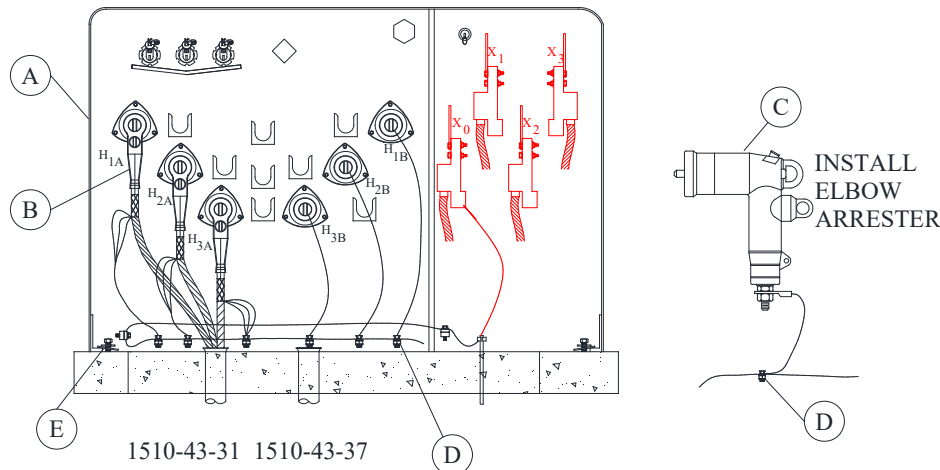
Rev: 08/01/20

OPEN LOOP TRANSFORMER



1510-43-01 1510-43-07
 1510-43-03 1510-43-10
 1510-43-05 1510-43-15

RADIAL FEED TRANSFORMER




1510-43-31 1510-43-37
 1510-43-33 1510-43-40
 1510-43-35 1510-43-45

1. INSTALL INSULATOR STANDOFF IN TRANSFORMERS.
2. PARK 1 SET OF CABLES ON INSULATOR STANDOFF.
3. INSTALL ELBOW ARRESTORS ON OPEN BUSHINGS.

ALLOW SUFFICIENT LENGTH OF CONCENTRIC NEUTRAL WIRES AND ARRESTOR GROUND LEAD TO ENSURE FREE MOVEMENT OF ELBOWS DURING HOT-STICK OPERATIONS.

GROUND DRAIN WIRES FROM BUSHING TERMINATIONS PER MANUFACTURER'S INSTRUCTIONS TO AVOID DANGEROUS VOLTAGE LEVELS ON THE SURFACE OF DEAD-FRONT EQUIPMENT.

1510-43	TRANSFORMER - PAD MOUNT	
Sheet 3 of 4		
	XFMR PAD MOUNT RADIAL/OPEN LOOP FEED 3PH 120/208V	Rev: 08/01/20

MU-ID MU-REF MU-DESCRIPTION

XFMRPM3PH120/208-500-OL 15104310 XFMR PM 3PH 120/208 500KVA OL

ID	CU-REF	CU-DESC	QTY	MU-REF
A	15101510	XFMR PAD MOUNT 3PH 120/208 500 KVA	1	15104310
B	15021502	ELBOW LOADBREAK 200 AMP 1/0 AWG AL 15KV	6	15104310
C	15020901	BUSHING PARKING LDBK 200 AMP 15KV	3	15104310
D	15020701	ARRESTOR ELBOW 15KV	3	15104310
E	12450413	CONN SPLIT BOLT 2 STRD CU	9	15104310
F	15020201	ANCH HARDWARE FOR CIP PADS	2	15104310
G	15022130	FAULT INDICATOR WITH 3 PHASE LED LEAD	1	15104310

XFMRPM3PH120/208-750-OL 15104315 XFMR PM 3PH 120/208 750KVA OL

ID	CU-REF	CU-DESC	QTY	MU-REF
A	15101515	XFMR PAD MOUNT 3PH 120/208 750 KVA	1	15104315
B	15021502	ELBOW LOADBREAK 200 AMP 1/0 AWG AL 15KV	6	15104315
C	15020901	BUSHING PARKING LDBK 200 AMP 15KV	3	15104315
D	15020701	ARRESTOR ELBOW 15KV	3	15104315
E	12450413	CONN SPLIT BOLT 2 STRD CU	9	15104315
F	15020201	ANCH HARDWARE FOR CIP PADS	2	15104315
G	15022130	FAULT INDICATOR WITH 3 PHASE LED LEAD	1	15104315

XFMRPM3PH120/208-75-RF 15104331 XFMR PM 3PH 120/208 75 KVA RF

ID	CU-REF	CU-DESC	QTY	MU-REF
A	15101501	XFMR PAD MOUNT 3PH 120/208 75 KVA	1	15104331
B	15021502	ELBOW LOADBREAK 200 AMP 1/0 AWG AL 15KV	3	15104331
C	15020701	ARRESTOR ELBOW 15KV	3	15104331
D	12450413	CONN SPLIT BOLT 2 STRD CU	6	15104331
E	15020201	ANCH HARDWARE FOR CIP PADS	2	15104331
F	15022130	FAULT INDICATOR WITH 3 PHASE LED LEAD	1	15104331

XFMRPM3PH120/208-150-RF 15104333 XFMR PM 3PH 120/208 150KVA RF

ID	CU-REF	CU-DESC	QTY	MU-REF
A	15101503	XFMR PAD MOUNT 3PH 120/208 150 KVA	1	15104333
B	15021502	ELBOW LOADBREAK 200 AMP 1/0 AWG AL 15KV	3	15104333
C	15020701	ARRESTOR ELBOW 15KV	3	15104333
D	12450413	CONN SPLIT BOLT 2 STRD CU	6	15104333
E	15020201	ANCH HARDWARE FOR CIP PADS	2	15104333
F	15022130	FAULT INDICATOR WITH 3 PHASE LED LEAD	1	15104333



Rev: 08/01/20

TRANSFORMER - PAD MOUNT

XFMR PAD MOUNT RADIAL/OPEN LOOP FEED 3PH 120/208V

1510-43

Sheet 4 of 4

MU-ID

MU-REF

MU-DESCRIPTION

XFMRPM3PH120/208-225-RF

15104335

XFMR PM 3PH 120/208 225KVA RF

ID	CU-REF	CU-DESC	QTY	MU-REF
A	15101505	XFMR PAD MOUNT 3PH 120/208 225 KVA	1	15104335
B	15021502	ELBOW LOADBREAK 200 AMP 1/0 AWG AL 15KV	3	15104335
C	15020701	ARRESTOR ELBOW 15KV	3	15104335
D	12450413	CONN SPLIT BOLT 2 STRD CU	6	15104335
E	15020201	ANCH HARDWARE FOR CIP PADS	2	15104335
F	15022130	FAULT INDICATOR WITH 3 PHASE LED LEAD	1	15104335

XFMRPM3PH120/208-300-RF

15104337

XFMR PM 3PH 120/208 300KVA RF

ID	CU-REF	CU-DESC	QTY	MU-REF
A	15101507	XFMR PAD MOUNT 3PH 120/208 300 KVA	1	15104337
B	15021502	ELBOW LOADBREAK 200 AMP 1/0 AWG AL 15KV	3	15104337
C	15020701	ARRESTOR ELBOW 15KV	3	15104337
D	12450413	CONN SPLIT BOLT 2 STRD CU	6	15104337
E	15020201	ANCH HARDWARE FOR CIP PADS	2	15104337
F	15022130	FAULT INDICATOR WITH 3 PHASE LED LEAD	1	15104337

XFMRPM3PH120/208-500-RF

15104340

XFMR PM 3 PH 120/208 500KVA RF

ID	CU-REF	CU-DESC	QTY	MU-REF
A	15101510	XFMR PAD MOUNT 3PH 120/208 500 KVA	1	15104340
B	15021502	ELBOW LOADBREAK 200 AMP 1/0 AWG AL 15KV	3	15104340
C	15020701	ARRESTOR ELBOW 15KV	3	15104340
D	12450413	CONN SPLIT BOLT 2 STRD CU	6	15104340
E	15020201	ANCH HARDWARE FOR CIP PADS	2	15104340
F	15022130	FAULT INDICATOR WITH 3 PHASE LED LEAD	1	15104340

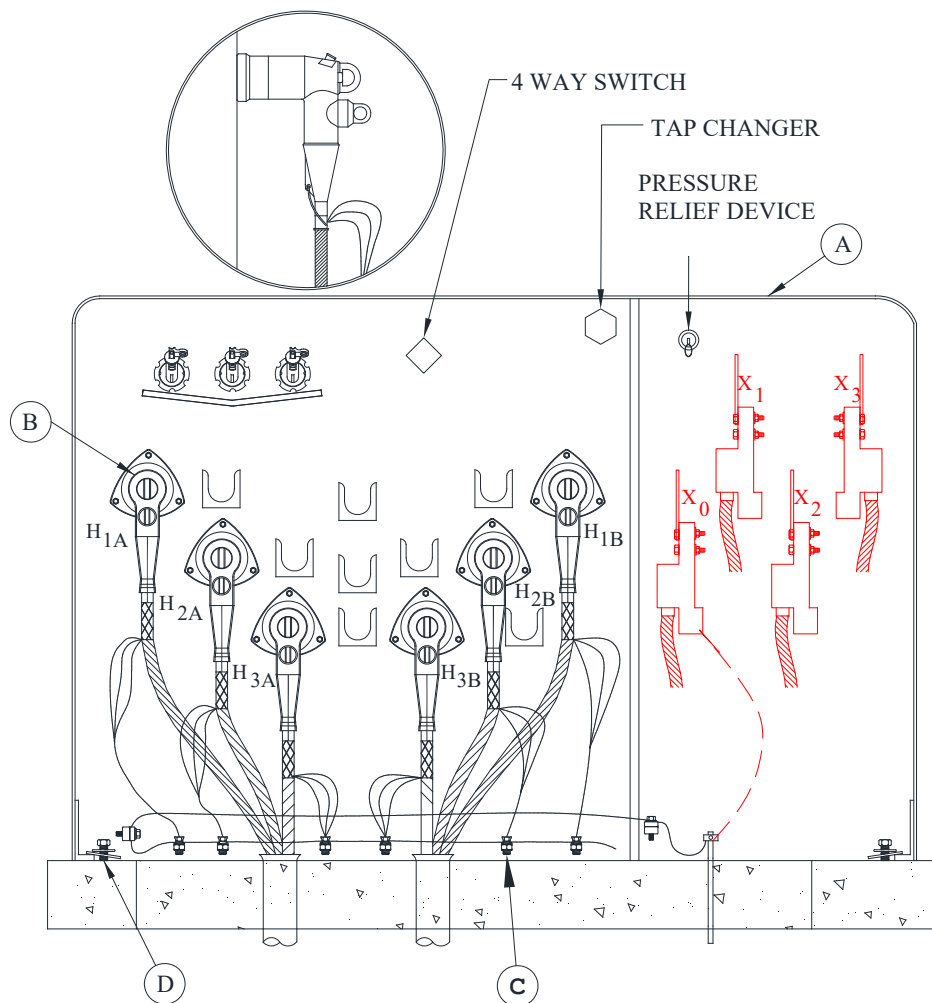
XFMRPM3PH120/208-750-RF

15104345

XFMR PM 3PH 120/208 750KVA RF

ID	CU-REF	CU-DESC	QTY	MU-REF
A	15101515	XFMR PAD MOUNT 3PH 120/208 750 KVA	1	15104345
B	15021502	ELBOW LOADBREAK 200 AMP 1/0 AWG AL 15KV	3	15104345
C	15020701	ARRESTOR ELBOW 15KV	3	15104345
D	12450413	CONN SPLIT BOLT 2 STRD CU	6	15104345
E	15020201	ANCH HARDWARE FOR CIP PADS	2	15104345
F	15022130	FAULT INDICATOR WITH 3 PHASE LED LEAD	1	15104345

TRANSFORMER - PAD MOUNT
XFMR PAD MOUNT LOOP FEED 3PH 277/480V



1510-51-01 1510-51-15
 1510-51-03 1510-51-20
 1510-51-05 1510-51-25
 1510-51-07 1510-51-30
 1510-51-10 1510-51-35

INSTALL ELBOWSURGE ARRESTERS ON THE FOLLOWING AS SHOWN ON PAGE 1544-30.

1. THE LAST TRANSFORMER IN A RADIAL MULTIPLE TRANSFORMER CIRCUIT SERVING COMMERCIAL LOADS
2. ALL OPEN POINT 3PH TRANSFORMERS IN LOOP FEED CIRCUIT. ALLOW SUFFICIENT LENGTH OF CONCENTRIC NEUTRAL WIRES AND ARRESTER GROUND LEAD TO ENSURE FREE MOVEMENT OF ELBOWS DURING HOT-STICK OPERATIONS.



Rev: 08/01/20

TRANSFORMER - PAD MOUNT
XFMR PAD MOUNT LOOP FEED 3PH 277/480V

1510-51

Sheet 2 of 3

MU

MU-ID	MU-REF	MU-DESCRIPTION
--------------	---------------	-----------------------

XFMRPM3PH277/480-75-LF	15105101	XFMR PM 3PH 277/480 75KVA LP FD
------------------------	----------	---------------------------------

ID	CU-REF	CU-DESC	QTY	MU-REF
A	15102001	XFMR PAD MOUNT 3PH 277/480 75 KVA	1	15105101
B	15021502	ELBOW LOADBREAK 200 AMP 1/0 AWG AL 15KV	6	15105101
C	12450413	CONN SPLIT BOLT 2 STRD CU	6	15105101
D	15020201	ANCH HARDWARE FOR CIP PADS	2	15105101
E	15022130	FAULT INDICATOR WITH 3 PHASE LED LEAD	1	15105101

XFMRPM3PH277/480-150-LF	15105103	XFMR PM 3PH 277/480 150KVA LP FD
-------------------------	----------	----------------------------------

ID	CU-REF	CU-DESC	QTY	MU-REF
A	15102003	XFMR PAD MOUNT 3PH 277/480 150 KVA	1	15105103
B	15021502	ELBOW LOADBREAK 200 AMP 1/0 AWG AL 15KV	6	15105103
C	12450413	CONN SPLIT BOLT 2 STRD CU	6	15105103
D	15020201	ANCH HARDWARE FOR CIP PADS	2	15105103
E	15022130	FAULT INDICATOR WITH 3 PHASE LED LEAD	1	15105103

XFMRPM3PH277/480-225-LF	15105105	XFMR PM 3PH 277/480 225KVA LP FD
-------------------------	----------	----------------------------------

ID	CU-REF	CU-DESC	QTY	MU-REF
A	15102005	XFMR PAD MOUNT 3PH 277/480 225 KVA	1	15105105
B	15021502	ELBOW LOADBREAK 200 AMP 1/0 AWG AL 15KV	6	15105105
C	12450413	CONN SPLIT BOLT 2 STRD CU	6	15105105
D	15020201	ANCH HARDWARE FOR CIP PADS	2	15105105
E	15022130	FAULT INDICATOR WITH 3 PHASE LED LEAD	1	15105105


XFMRPM3PH277/480-300-LF	15105107	XFMR PM 3PH 277/480 300KVA LP FD
-------------------------	----------	----------------------------------

ID	CU-REF	CU-DESC	QTY	MU-REF
A	15102007	XFMR PAD MOUNT 3PH 277/480 300 KVA	1	15105107
B	15021502	ELBOW LOADBREAK 200 AMP 1/0 AWG AL 15KV	6	15105107
C	12450413	CONN SPLIT BOLT 2 STRD CU	6	15105107
D	15020201	ANCH HARDWARE FOR CIP PADS	2	15105107
E	15022130	FAULT INDICATOR WITH 3 PHASE LED LEAD	1	15105107

XFMRPM3PH277/480-500-LF	15105110	XFMR PM 3PH 277/480 500KVA LP FD
-------------------------	----------	----------------------------------

ID	CU-REF	CU-DESC	QTY	MU-REF
A	15102010	XFMR PAD MOUNT 3PH 277/480 500 KVA	1	15105110
B	15021502	ELBOW LOADBREAK 200 AMP 1/0 AWG AL 15KV	6	15105110
C	12450413	CONN SPLIT BOLT 2 STRD CU	6	15105110
D	15020201	ANCH HARDWARE FOR CIP PADS	2	15105110
E	15022130	FAULT INDICATOR WITH 3 PHASE LED LEAD	1	15105110

XFMRPM3PH277/480-750-LF	15105115	XFMR PM 3PH 277/480 750KVA LP FD
-------------------------	----------	----------------------------------

1510-51	TRANSFORMER - PAD MOUNT XFMR PAD MOUNT LOOP FEED 3PH 277/480V	
Sheet 2 of 3		Rev: 08/01/20

ID	CU-REF	CU-DESC	QTY	MU-REF
A	15102015	XFMR PAD MOUNT 3PH 277/480 750 KVA	1	15105115
B	15021502	ELBOW LOADBREAK 200 AMP 1/0 AWG AL 15KV	6	15105115
C	12450413	CONN SPLIT BOLT 2 STRD CU	6	15105115
D	15020201	ANCH HARDWARE FOR CIP PADS	2	15105115
E	15022130	FAULT INDICATOR WITH 3 PHASE LED LEAD	1	15105115



Rev: 08/01/20

TRANSFORMER - PAD MOUNT
XFMR PAD MOUNT LOOP FEED 3PH 277/480V

1510-51

Sheet 3 of 3

MU-ID

MU-REF

MU-DESCRIPTION

XFMRPM3PH277/480-1000-LF 15105120 XFMR PM 3PH 277/480 1000KVA LP FD

ID	CU-REF	CU-DESC	QTY	MU-REF
A	15102020	XFMR PAD MOUNT 3PH 277/480 1000 KVA	1	15105120
B	15021502	ELBOW LOADBREAK 200 AMP 1/0 AWG AL 15KV	6	15105120
C	12450413	CONN SPLIT BOLT 2 STRD CU	6	15105120
D	15020201	ANCH HARDWARE FOR CIP PADS	2	15105120
E	15022130	FAULT INDICATOR WITH 3 PHASE LED LEAD	1	15105120

XFMRPM3PH277/480-1500-LF 15105125 XFMR PM 3PH 277/480 1500KVA LP FD

ID	CU-REF	CU-DESC	QTY	MU-REF
A	15102025	XFMR PAD MOUNT 3PH 277/480 1500 KVA	1	15105125
B	15021502	ELBOW LOADBREAK 200 AMP 1/0 AWG AL 15KV	6	15105125
C	12450413	CONN SPLIT BOLT 2 STRD CU	6	15105125
D	15020201	ANCH HARDWARE FOR CIP PADS	2	15105125
E	15022130	FAULT INDICATOR WITH 3 PHASE LED LEAD	1	15105125

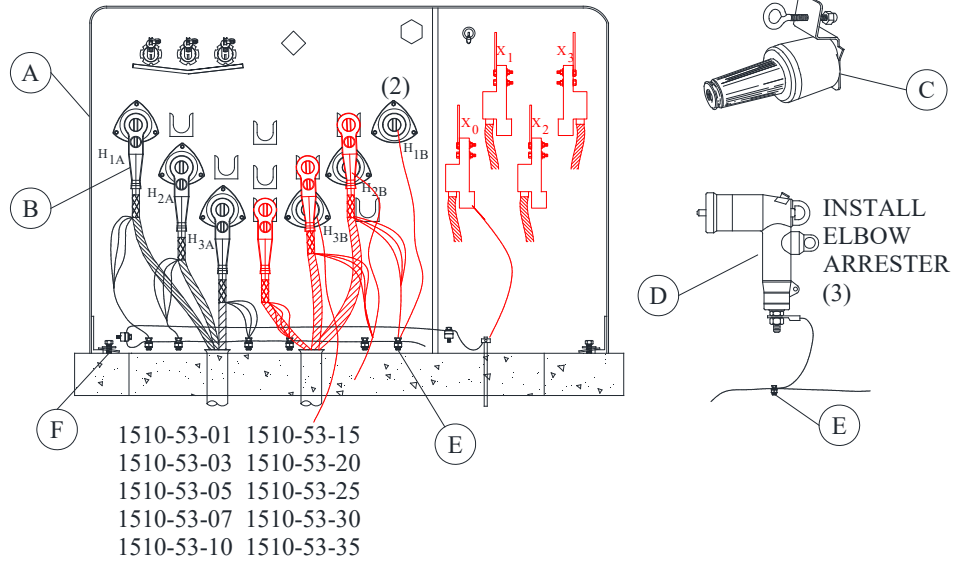
XFMRPM3PH277/480-2000-LF 15105130 XFMR PM 3PH 277/480 2000KVA LP FD

ID	CU-REF	CU-DESC	QTY	MU-REF
A	15102030	XFMR PAD MOUNT 3PH 277/480 2000 KVA	1	15105130
B	15021502	ELBOW LOADBREAK 200 AMP 1/0 AWG AL 15KV	6	15105130
C	12450413	CONN SPLIT BOLT 2 STRD CU	6	15105130
D	15020201	ANCH HARDWARE FOR CIP PADS	2	15105130
E	15022130	FAULT INDICATOR WITH 3 PHASE LED LEAD	1	15105130

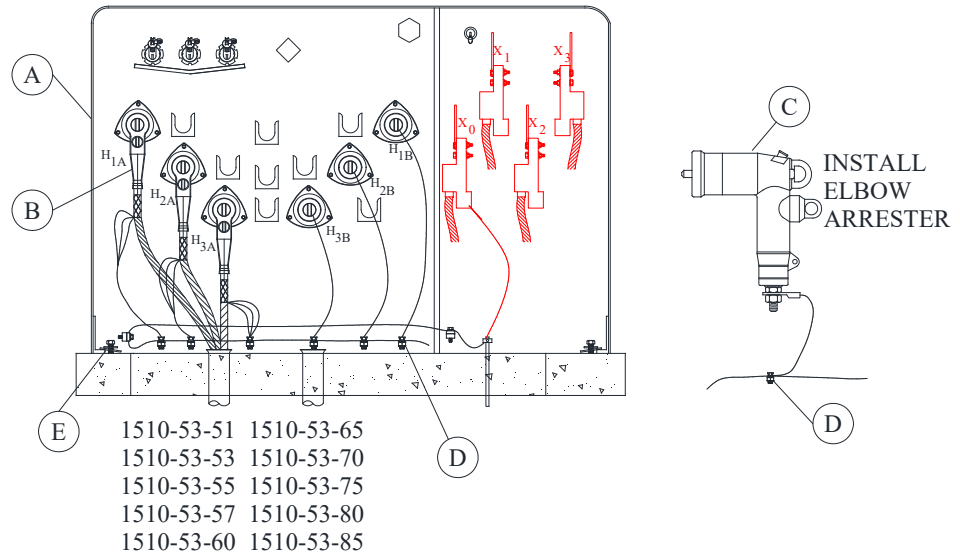
XFMRPM3PH277/480-2500-LF 15105135 XFMR PM 3PH 277/480 2500KVA LP FD

ID	CU-REF	CU-DESC	QTY	MU-REF
A	15102035	XFMR PAD MOUNT 3PH 277/480 2500 KVA	1	15105135
B	15021502	ELBOW LOADBREAK 200 AMP 1/0 AWG AL 15KV	6	15105135
C	12450413	CONN SPLIT BOLT 2 STRD CU	6	15105135
D	15020201	ANCH HARDWARE FOR CIP PADS	2	15105135
E	15022130	FAULT INDICATOR WITH 3 PHASE LED LEAD	1	15105135

OPEN LOOP TRANSFORMER



RADIAL FEED TRANSFORMER



1. INSTALL INSULATOR STANDOFF IN TRANSFORMERS.
2. PARK 1 SET OF CABLES ON INSULATOR STANDOFF.
3. INSTALL ELBOW ARRESTORS ON OPEN BUSHINGS.

ALLOW SUFFICIENT LENGTH OF CONCENTRIC NEUTRAL WIRES AND ARRESTOR GROUND LEAD TO ENSURE FREE MOVEMENT OF ELBOWS DURING HOT-STICK OPERATIONS.

GROUND DRAIN WIRES FROM BUSHING TERMINATIONS PER MANUFACTURER'S INSTRUCTIONS TO AVOID DANGEROUS VOLTAGE LEVELS ON THE SURFACE OF DEAD-FRONT EQUIPMENT.



Rev: 08/01/20

TRANSFORMER - PAD MOUNT

XFMR PAD MOUNT RADIAL/OPEN LOOP FEED 3PH 277/480V

1510-53

Sheet 2 of 6

MU

MU-ID	MU-REF	MU-DESCRIPTION
--------------	---------------	-----------------------

XFMRPM3PH277/480-75-OL	15105301	XFMR PM 3PH 277/480 75KVA OP LP
------------------------	----------	---------------------------------

ID	CU-REF	CU-DESC	QTY	MU-REF
A	15102001	XFMR PAD MOUNT 3PH 277/480 75 KVA	1	15105301
B	15021502	ELBOW LOADBREAK 200 AMP 1/0 AWG AL 15KV	6	15105301
C	15020901	BUSHING PARKING LDBK 200 AMP 15KV	3	15105301
D	15020701	ARRESTOR ELBOW 15KV	3	15105301
E	12450413	CONN SPLIT BOLT 2 STRD CU	9	15105301
F	15020201	ANCH HARDWARE FOR CIP PADS	2	15105301
G	15022130	FAULT INDICATOR WITH 3 PHASE LED LEAD	1	15105301

XFMRPM3PH277/480-150-OL	15105303	XFMR PM 3PH 277/480 150KVA OP LP
-------------------------	----------	----------------------------------


ID	CU-REF	CU-DESC	QTY	MU-REF
A	15102003	XFMR PAD MOUNT 3PH 277/480 150 KVA	1	15105303
B	15021502	ELBOW LOADBREAK 200 AMP 1/0 AWG AL 15KV	6	15105303
C	15020901	BUSHING PARKING LDBK 200 AMP 15KV	3	15105303
D	15020701	ARRESTOR ELBOW 15KV	3	15105303
E	12450413	CONN SPLIT BOLT 2 STRD CU	9	15105303
F	15020201	ANCH HARDWARE FOR CIP PADS	2	15105303
G	15022130	FAULT INDICATOR WITH 3 PHASE LED LEAD	1	15105303

XFMRPM3PH277/480-225-OL	15105305	XFMR PM 3PH 277/480 225KVA OP LP
-------------------------	----------	----------------------------------

ID	CU-REF	CU-DESC	QTY	MU-REF
A	15102005	XFMR PAD MOUNT 3PH 277/480 225 KVA	1	15105305
B	15021502	ELBOW LOADBREAK 200 AMP 1/0 AWG AL 15KV	6	15105305
C	15020901	BUSHING PARKING LDBK 200 AMP 15KV	3	15105305
D	15020701	ARRESTOR ELBOW 15KV	3	15105305
E	12450413	CONN SPLIT BOLT 2 STRD CU	9	15105305
F	15020201	ANCH HARDWARE FOR CIP PADS	2	15105305
G	15022130	FAULT INDICATOR WITH 3 PHASE LED LEAD	1	15105305

XFMRPM3PH277/480-300-OL	15105307	XFMR PM 3PH 277/480 300KVA OP LP
-------------------------	----------	----------------------------------

ID	CU-REF	CU-DESC	QTY	MU-REF
A	15102007	XFMR PAD MOUNT 3PH 277/480 300 KVA	1	15105307
B	15021502	ELBOW LOADBREAK 200 AMP 1/0 AWG AL 15KV	6	15105307
C	15020901	BUSHING PARKING LDBK 200 AMP 15KV	3	15105307
D	15020701	ARRESTOR ELBOW 15KV	3	15105307
E	12450413	CONN SPLIT BOLT 2 STRD CU	9	15105307
F	15020201	ANCH HARDWARE FOR CIP PADS	2	15105307
G	15022130	FAULT INDICATOR WITH 3 PHASE LED LEAD	1	15105307

 Rev: 08/01/20	TRANSFORMER - PAD MOUNT	1510-53
	XFMR PAD MOUNT RADIAL/OPEN LOOP FEED 3PH 277/480V	Sheet 4 of 6

MU-ID MU-REF MU-DESCRIPTION

XFMRPM3PH277/480-2000-OL 15105330 XFMR PM 3PH 277/480 2000KVA OP LP

ID	CU-REF	CU-DESC	QTY	MU-REF
A	15102030	XFMR PAD MOUNT 3PH 277/480 2000 KVA	1	15105330
B	15021502	ELBOW LOADBREAK 200 AMP 1/0 AWG AL 15KV	6	15105330
C	15020901	BUSHING PARKING LDBK 200 AMP 15KV	3	15105330
D	15020701	ARRESTOR ELBOW 15KV	3	15105330
E	12450413	CONN SPLIT BOLT 2 STRD CU	9	15105330
F	15020201	ANCH HARDWARE FOR CIP PADS	2	15105330
G	15022130	FAULT INDICATOR WITH 3 PHASE LED LEAD	1	15105330

XFMRPM3PH277/480-2500-OL 15105335 XFMR PM 3PH 277/480 2500KVA OP LP


ID	CU-REF	CU-DESC	QTY	MU-REF
A	15102035	XFMR PAD MOUNT 3PH 277/480 2500 KVA	1	15105335
B	15021502	ELBOW LOADBREAK 200 AMP 1/0 AWG AL 15KV	6	15105335
C	15020901	BUSHING PARKING LDBK 200 AMP 15KV	3	15105335
D	15020701	ARRESTOR ELBOW 15KV	3	15105335
E	12450413	CONN SPLIT BOLT 2 STRD CU	9	15105335
F	15020201	ANCH HARDWARE FOR CIP PADS	2	15105335
G	15022130	FAULT INDICATOR WITH 3 PHASE LED LEAD	1	15105335

XFMRPM3PH277/480-75-RF 15105351 XFMR PM 3PH 277/480 75KVA RF

ID	CU-REF	CU-DESC	QTY	MU-REF
A	15102001	XFMR PAD MOUNT 3PH 277/480 75 KVA	1	15105351
B	15021502	ELBOW LOADBREAK 200 AMP 1/0 AWG AL 15KV	3	15105351
C	15020701	ARRESTOR ELBOW 15KV	3	15105351
D	12450413	CONN SPLIT BOLT 2 STRD CU	6	15105351
E	15020201	ANCH HARDWARE FOR CIP PADS	2	15105351
F	15022130	FAULT INDICATOR WITH 3 PHASE LED LEAD	1	15105351

XFMRPM3PH277/480-150-RF 15105353 XFMR PM 3PH 277/480 150KVA RF

ID	CU-REF	CU-DESC	QTY	MU-REF
A	15102003	XFMR PAD MOUNT 3PH 277/480 150 KVA	1	15105353
B	15021502	ELBOW LOADBREAK 200 AMP 1/0 AWG AL 15KV	3	15105353
C	15020701	ARRESTOR ELBOW 15KV	3	15105353
D	12450413	CONN SPLIT BOLT 2 STRD CU	6	15105353
E	15020201	ANCH HARDWARE FOR CIP PADS	2	15105353
F	15022130	FAULT INDICATOR WITH 3 PHASE LED LEAD	1	15105353

1510-53	TRANSFORMER - PAD MOUNT	
Sheet 5 of 6		
	XFMR PAD MOUNT RADIAL/OPEN LOOP FEED 3PH 277/480V	Rev: 08/01/20

MU-ID MU-REF MU-DESCRIPTION

XFMRPM3PH277/480-225-RF 15105355 XFMR PM 3PH 277/480 225KVA RF

ID	CU-REF	CU-DESC	QTY	MU-REF
A	15102005	XFMR PAD MOUNT 3PH 277/480 225 KVA	1	15105355
B	15021502	ELBOW LOADBREAK 200 AMP 1/0 AWG AL 15KV	3	15105355
C	15020701	ARRESTOR ELBOW 15KV	3	15105355
D	12450413	CONN SPLIT BOLT 2 STRD CU	6	15105355
E	15020201	ANCH HARDWARE FOR CIP PADS	2	15105355
F	15022130	FAULT INDICATOR WITH 3 PHASE LED LEAD	1	15105355

XFMRPM3PH277/480-300-RF 15105357 XFMR PM 3PH 277/480 300KVA RF

ID	CU-REF	CU-DESC	QTY	MU-REF
A	15102007	XFMR PAD MOUNT 3PH 277/480 300 KVA	1	15105357
B	15021502	ELBOW LOADBREAK 200 AMP 1/0 AWG AL 15KV	3	15105357
C	15020701	ARRESTOR ELBOW 15KV	3	15105357
D	12450413	CONN SPLIT BOLT 2 STRD CU	6	15105357
E	15020201	ANCH HARDWARE FOR CIP PADS	2	15105357
F	15022130	FAULT INDICATOR WITH 3 PHASE LED LEAD	1	15105357

XFMRPM3PH277/480-500-RF 15105360 XFMR PM 3PH 277/480 500KVA RF


ID	CU-REF	CU-DESC	QTY	MU-REF
A	15102010	XFMR PAD MOUNT 3PH 277/480 500 KVA	1	15105360
B	15021502	ELBOW LOADBREAK 200 AMP 1/0 AWG AL 15KV	3	15105360
C	15020701	ARRESTOR ELBOW 15KV	3	15105360
D	12450413	CONN SPLIT BOLT 2 STRD CU	6	15105360
E	15020201	ANCH HARDWARE FOR CIP PADS	2	15105360
F	15022130	FAULT INDICATOR WITH 3 PHASE LED LEAD	1	15105360

XFMRPM3PH277/480-750-RF 15105365 XFMR PM 3PH 277/480 750KVA RF

ID	CU-REF	CU-DESC	QTY	MU-REF
A	15102015	XFMR PAD MOUNT 3PH 277/480 750 KVA	1	15105365
B	15021502	ELBOW LOADBREAK 200 AMP 1/0 AWG AL 15KV	3	15105365
C	15020701	ARRESTOR ELBOW 15KV	3	15105365
D	12450413	CONN SPLIT BOLT 2 STRD CU	6	15105365
E	15020201	ANCH HARDWARE FOR CIP PADS	2	15105365
F	15022130	FAULT INDICATOR WITH 3 PHASE LED LEAD	1	15105365

XFMRPM3PH277/480-1000-RF 15105370 XFMR PM 3PH 277/480 1000KVA RF

ID	CU-REF	CU-DESC	QTY	MU-REF
A	15102020	XFMR PAD MOUNT 3PH 277/480 1000 KVA	1	15105370
B	15021502	ELBOW LOADBREAK 200 AMP 1/0 AWG AL 15KV	3	15105370

	TRANSFORMER - PAD MOUNT			1510-53
	XFMR PAD MOUNT RADIAL/OPEN LOOP FEED 3PH 277/480V			Sheet 5 of 6
Rev: 08/01/20				
ID	CU-REF	CU-DESC	QTY	MU-REF
C	15020701	ARRESTOR ELBOW 15KV	3	15105370
D	12450413	CONN SPLIT BOLT 2 STRD CU	6	15105370
E	15020201	ANCH HARDWARE FOR CIP PADS	2	15105370
F	15022130	FAULT INDICATOR WITH 3 PHASE LED LEAD	1	15105370

1510-53	TRANSFORMER - PAD MOUNT	
Sheet 6 of 6		
	XFMR PAD MOUNT RADIAL/OPEN LOOP FEED 3PH 277/480V	Rev: 08/01/20

MU-ID MU-REF MU-DESCRIPTION

XFMRPM3PH277/480-1500-RF 15105375 XFMR PM 3PH 277/480 1500KVA RF

ID	CU-REF	CU-DESC	QTY	MU-REF
A	15102025	XFMR PAD MOUNT 3PH 277/480 1500 KVA	1	15105375
B	15021502	ELBOW LOADBREAK 200 AMP 1/0 AWG AL 15KV	3	15105375
C	15020701	ARRESTOR ELBOW 15KV	3	15105375
D	12450413	CONN SPLIT BOLT 2 STRD CU	6	15105375
E	15020201	ANCH HARDWARE FOR CIP PADS	2	15105375
F	15022130	FAULT INDICATOR WITH 3 PHASE LED LEAD	1	15105375

XFMRPM3PH277/480-2000-RF 15105380 XFMR PM 3PH 277/480 2000KVA RF

ID	CU-REF	CU-DESC	QTY	MU-REF
A	15102030	XFMR PAD MOUNT 3PH 277/480 2000 KVA	1	15105380
B	15021502	ELBOW LOADBREAK 200 AMP 1/0 AWG AL 15KV	3	15105380
C	15020701	ARRESTOR ELBOW 15KV	3	15105380
D	12450413	CONN SPLIT BOLT 2 STRD CU	6	15105380
E	15020201	ANCH HARDWARE FOR CIP PADS	2	15105380
F	15022130	FAULT INDICATOR WITH 3 PHASE LED LEAD	1	15105380

XFMRPM3PH277/480-2500-RF 15105385 XFMR PM 3PH 277/480 2500KVA RF

ID	CU-REF	CU-DESC	QTY	MU-REF
A	15102035	XFMR PAD MOUNT 3PH 277/480 2500 KVA	1	15105385
B	15021502	ELBOW LOADBREAK 200 AMP 1/0 AWG AL 15KV	3	15105385
C	15020701	ARRESTOR ELBOW 15KV	3	15105385
D	12450413	CONN SPLIT BOLT 2 STRD CU	6	15105385
E	15020201	ANCH HARDWARE FOR CIP PADS	2	15105385
F	15022130	FAULT INDICATOR WITH 3 PHASE LED LEAD	1	15105385